

StoPowerwall®

Commercial

Frame Construction

Series 4.xx

December 2015

ATTENTION

Sto products are intended for use by qualified professional contractors, not consumers, as a component of a larger construction assembly as specified by a qualified design professional, general contractor or builder. They should be installed in accordance with those specifications and Sto's instructions. Sto Corp. disclaims all, and assumes no, liability for on-site inspections, for its products applied improperly, or by unqualified persons or entities, or as part of an improperly designed or constructed building, for the nonperformance of adjacent building components or assemblies, or for other construction activities beyond Sto's control. Improper use of Sto products or use as part of an improperly designed or constructed larger assembly or building may result in serious damage to Sto products, and to the structure of the building or its components.

STO CORP. DISCLAIMS ALL WARRANTIES EXPRESSED OR IMPLIED EXCEPT FOR EXPLICIT LIMITED WRITTEN WARRANTIES ISSUED TO AND ACCEPTED BY BUILDING OWNERS IN ACCORDANCE WITH STO'S WARRANTY PROGRAMS WHICH ARE SUBJECT TO CHANGE FROM TIME TO TIME. For the fullest, most current information on proper application, clean-up, mixing and other specifications and warranties, cautions and disclaimers, please refer to the Sto Corp. website, www.stocorp.com.

www.stocorp.com

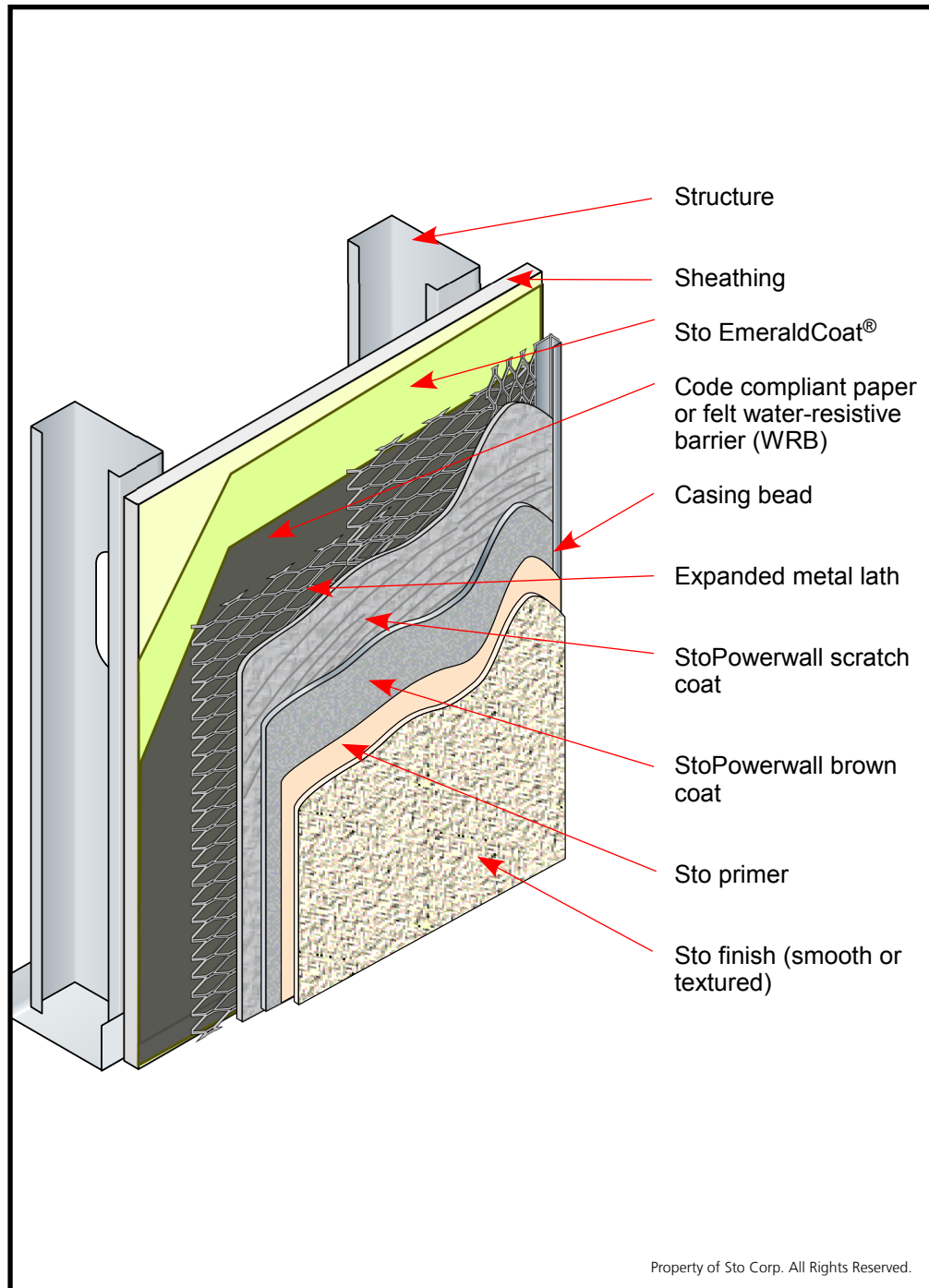


Property of Sto Corp.
All Rights Reserved.

StoPowerwall® Components

Detail No.: 4.01

Date: December 2015



Notes:

Detail shows the installation of StoPowerwall Stucco over a steel frame wall in two coats.

Sto materials:

- 1] StoGuard® with Sto EmeraldCoat®
- 2] StoPowerwall scratch coat
- 3] Sto Powerwall brown coat
- 4] Sto Hot Prime® or Sto Primer
- 5] Sto finish (smooth or textured)

Accessory materials including means for fastening:

- 1] Expanded metal lath
- 2] Casing bead
- 3] Other accessories as may be required (e.g. weep screeds, etc.)

IMPORTANT: Components not identified as Sto are furnished by other manufacturers and are not necessarily installed by trades who install the Sto products. Refer to project specific contract documents.

Attention

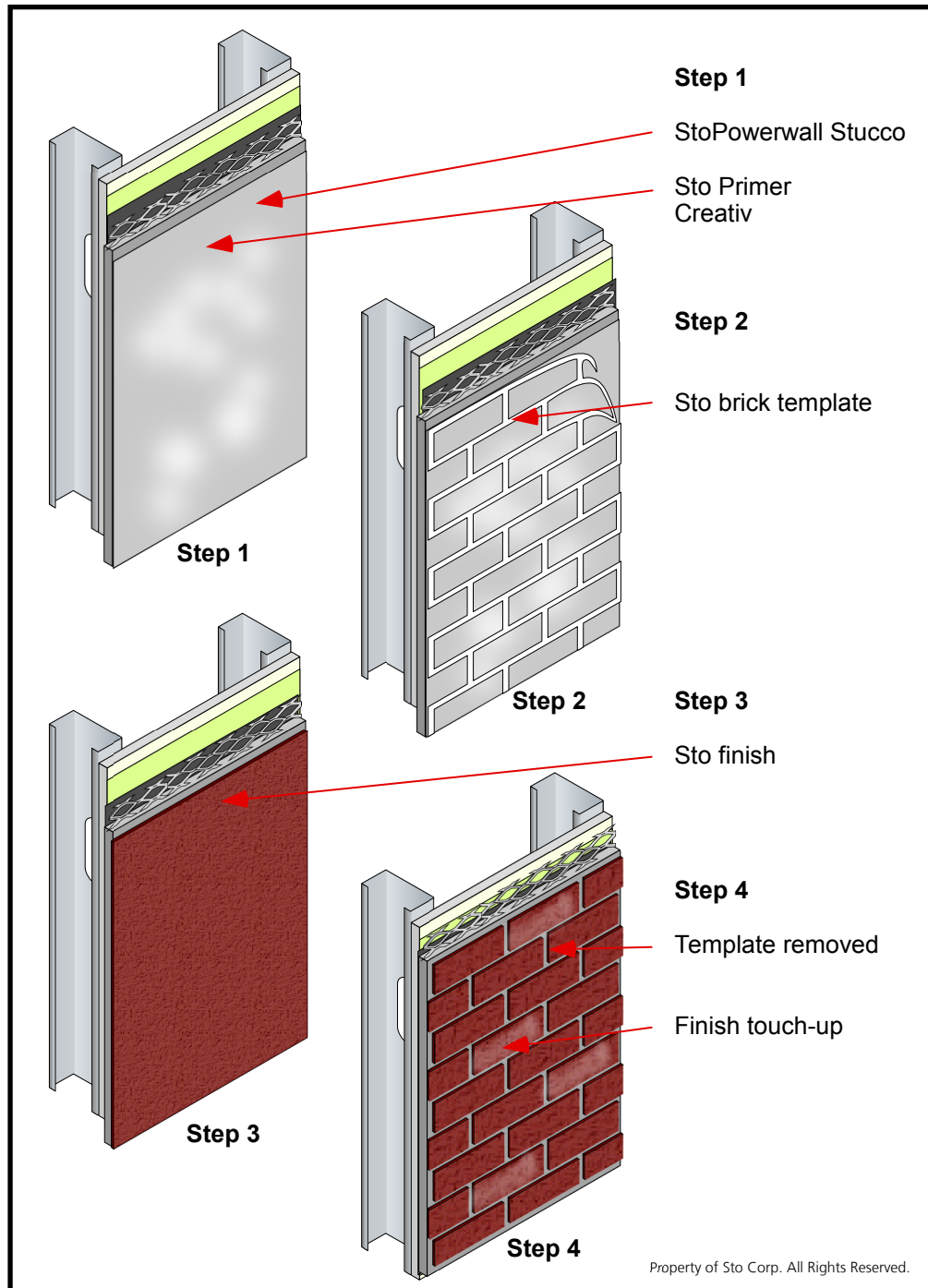
Sto products are intended for use by qualified professional contractors, not consumers, as a component of a larger construction assembly as specified by a qualified design professional, general contractor or builder. They should be installed in accordance with those specifications and Sto's instructions. Sto Corp. disclaims all, and assumes no, liability for on-site inspections, for its products applied improperly, or by unqualified persons or entities, or as part of an improperly designed or constructed building, for the nonperformance of adjacent building components or assemblies, or for other construction activities beyond Sto's control. Improper use of Sto products or use as part of an improperly designed or constructed larger assembly or building may result in serious damage to Sto products, and to the structure of the building or its components. **STO CORP. DISCLAIMS ALL WARRANTIES EXPRESS OR IMPLIED EXCEPT FOR EXPLICIT LIMITED WRITTEN WARRANTIES ISSUED TO AND ACCEPTED BY BUILDING OWNERS IN ACCORDANCE WITH STO'S WARRANTY PROGRAMS WHICH ARE SUBJECT TO CHANGE FROM TIME TO TIME.** For the fullest, most current information on proper application, clean-up, mixing and other specifications and warranties, cautions and disclaimers, please refer to the Sto Corp. website, www.stocorp.com.

www.stocorp.com

StoPowerwall® StoCreativ® Brick Finish

Detail No.: 4.05

Date: December 2015



Notes:

Step 1

- 1] Install StoPowerwall stucco [Refer to Sto Detail 4.01].
- 2] Install Sto Primer Creativ over the Sto Powerwall base coat.
- 3] Optional: Apply a second application of Sto Primer Creativ to provide a slightly uneven color to simulate variable mortar color.

Step 2

- 4] Apply the Sto brick template to the dry primer.

Step 3

- 5] Install appropriate Sto finish to match the Creativ Brick texture specified. Refer to Sto Creativ Brick Specification A100 FF

Step 4

- 6] Remove the template before the finish dries.
- 7] Optional: After the finish dries, touch up the finish with StoCoat® Acryl or StoTique® in colors and pattern to match approved sample.

IMPORTANT: Components not identified as Sto are furnished by other manufacturers and are not necessarily installed by trades who install the Sto products. Refer to project specific contract documents.

Attention

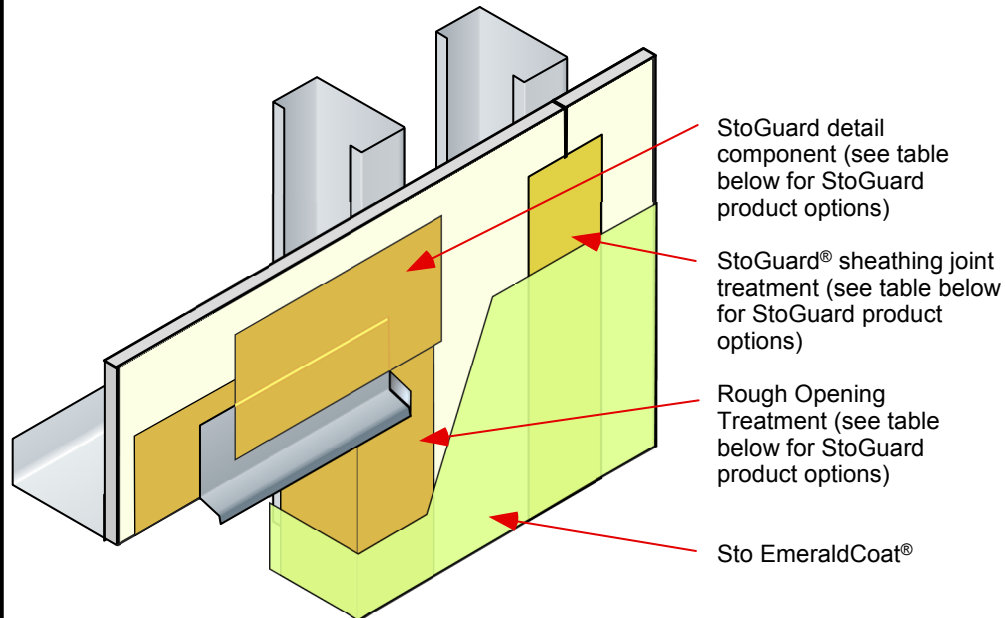
Sto products are intended for use by qualified professional contractors, not consumers, as a component of a larger construction assembly as specified by a qualified design professional, general contractor or builder. They should be installed in accordance with those specifications and Sto's instructions. Sto Corp. disclaims all, and assumes no, liability for on-site inspections, for its products applied improperly, or by unqualified persons or entities, or as part of an improperly designed or constructed building, for the nonperformance of adjacent building components or assemblies, or for other construction activities beyond Sto's control. Improper use of Sto products or use as part of an improperly designed or constructed larger assembly or building may result in serious damage to Sto products, and to the structure of the building or its components. **STO CORP. DISCLAIMS ALL WARRANTIES EXPRESS OR IMPLIED EXCEPT FOR EXPLICIT LIMITED WRITTEN WARRANTIES ISSUED TO AND ACCEPTED BY BUILDING OWNERS IN ACCORDANCE WITH STO'S WARRANTY PROGRAMS WHICH ARE SUBJECT TO CHANGE FROM TIME TO TIME.** For the fullest, most current information on proper application, clean-up, mixing and other specifications and warranties, cautions and disclaimers, please refer to the Sto Corp. website, www.stocorp.com.

www.stocorp.com

StoPowerwall® StoGuard® Components

Detail No.: 4.09

Date: November 2015



StoGuard® Components for use with StoPowerwall®

Product or Product Combination	Sheathing Joint	Rough Opening	Detail Component
StoGuard RapidFill	✓		✓
StoGuard RapidSeal	✓	✓	✓
StoGuard Fabric embedded in Sto Emerald Coat	✓	✓	✓
StoGuard Transition Membrane embedded in StoGuard RapidFill, StoGuard RapidSeal or Sto Emerald Coat			✓
Sto Gold Fill with StoGuard Mesh or Sto Detail Mesh	✓	✓	✓
StoGuard Tape		✓	

Notes:

- 1] Refer to Sto detail series 20.xx or 21.xx for complete instructions regarding material options and application instructions for StoGuard products.
- 2] Flashing must be installed at the head and sill of window openings and integrated into the StoGuard system with StoGuard detail components.
- 3] The upper edge of StoGuard Tape must be lapped with a StoGuard detail component to direct water away from the substrate.
- 4] Refer to StoGuard Transition Membrane installation guide for step-by-step instructions for detailing with StoGuard Transition Membrane.
- 5] Refer to the individual Sto product bulletin and applicable Sto specification for the products being used.
- 6] Refer to the most current Sto product bulletins, specifications, installation guides and other information are available at www.stocorp.com.

IMPORTANT: Components not identified as Sto are furnished by other manufacturers and are not necessarily installed by trades who install the Sto products. Refer to project specific contract documents.

Property of Sto Corp. All Rights Reserved.

Attention

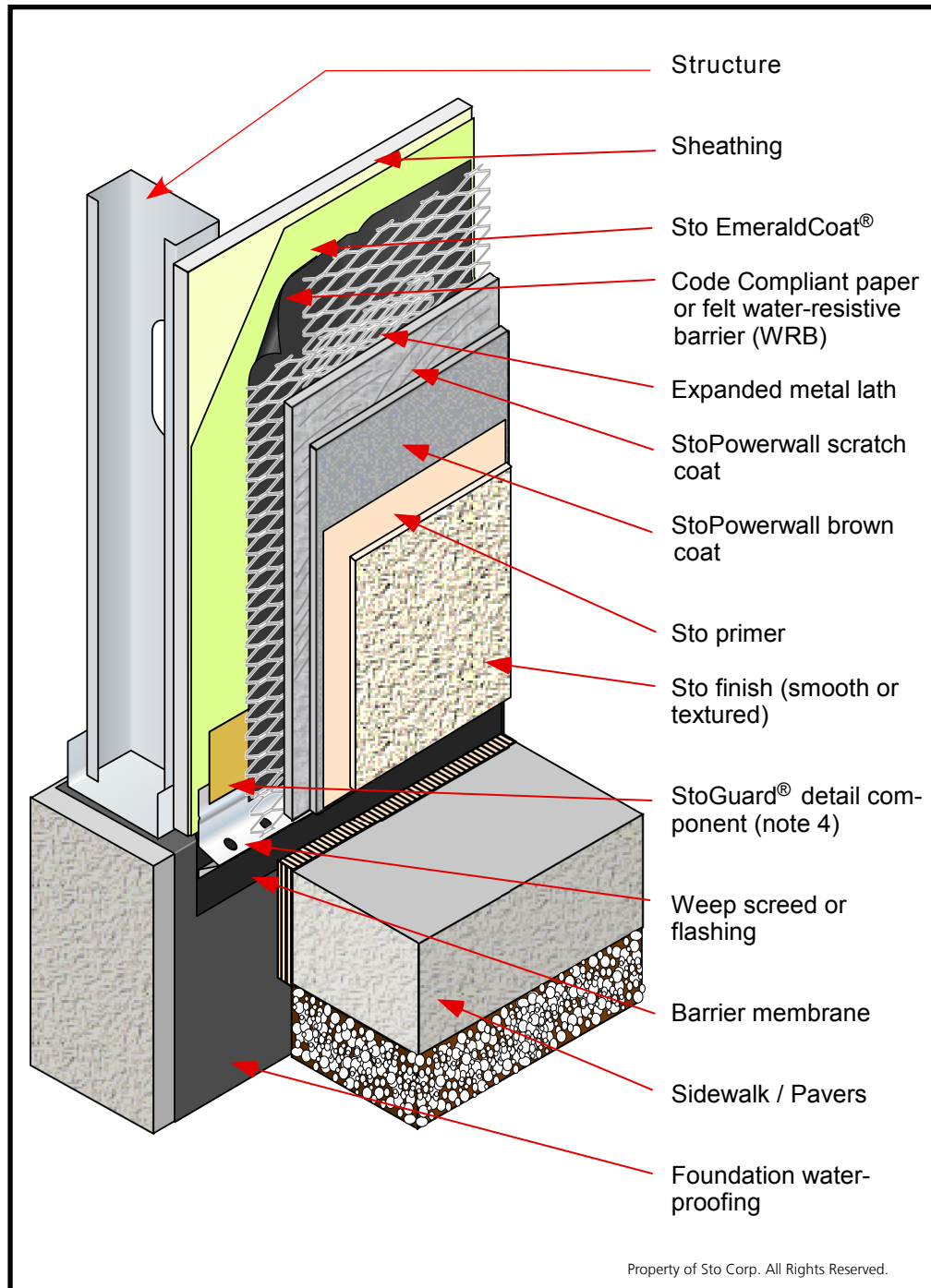
www.stocorp.com

Sto products are intended for use by qualified professional contractors, not consumers, as a component of a larger construction assembly as specified by a qualified design professional, general contractor or builder. They should be installed in accordance with those specifications and Sto's instructions. Sto Corp. disclaims all, and assumes no, liability for on-site inspections, for its products applied improperly, or by unqualified persons or entities, or as part of an improperly designed or constructed building, for the nonperformance of adjacent building components or assemblies, or for other construction activities beyond Sto's control. Improper use of Sto products or use as part of an improperly designed or constructed larger assembly or building may result in serious damage to Sto products, and to the structure of the building or its components. **STO CORP. DISCLAIMS ALL WARRANTIES EXPRESS OR IMPLIED EXCEPT FOR EXPLICIT LIMITED WRITTEN WARRANTIES ISSUED TO AND ACCEPTED BY BUILDING OWNERS IN ACCORDANCE WITH STO'S WARRANTY PROGRAMS WHICH ARE SUBJECT TO CHANGE FROM TIME TO TIME.** For the fullest, most current information on proper application, clean-up, mixing and other specifications and warranties, cautions and disclaimers, please refer to the Sto Corp. website, www.stocorp.com.

Sto Powerwall® Termination at Grade: Sidewalk / Pavers

Detail No.: 4.10

Date: December 2015



Notes:

- 1] Install barrier membrane at bottom of frame wall to provide protection from rain penetration below the stucco.
- 2] Install stucco weep screed or flashing to terminate minimum 1" (25 mm) below sill plate .
- 3] Provide minimum 2" (50 mm) clearance between nose of weep screed and sidewalk / paved surface. Increase distance when snow and ice may accumulate
- 4] Lap StoGuard® detail component onto weep screed to direct water to the exterior. See Sto detail 4.09
- 5] Provide waterproofing at the foundation to protect the support structure from rising damp.

IMPORTANT: Components not identified as Sto are furnished by other manufacturers and are not necessarily installed by trades who install the Sto products. Refer to project specific contract documents.

Property of Sto Corp. All Rights Reserved.

Attention

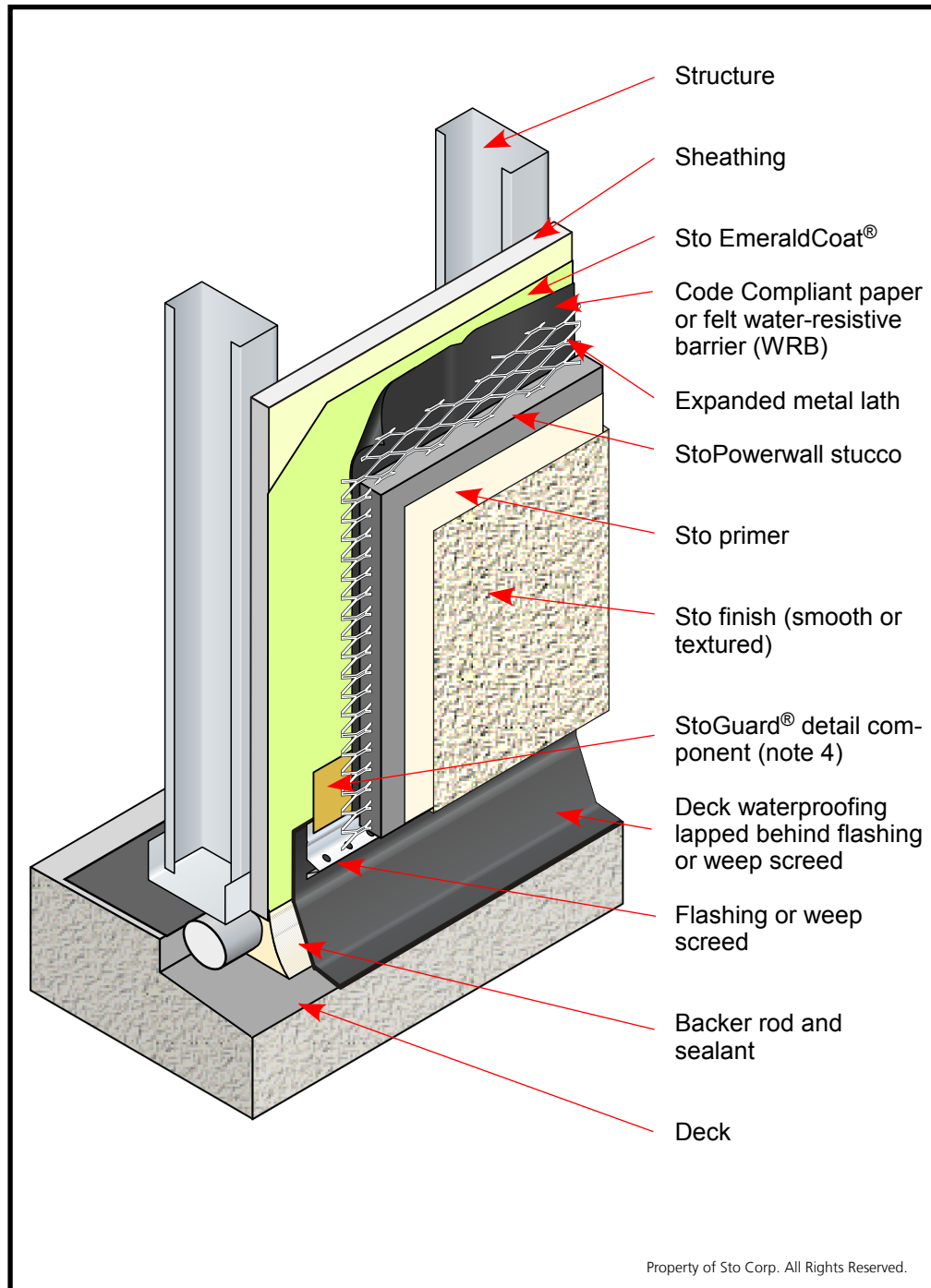
Sto products are intended for use by qualified professional contractors, not consumers, as a component of a larger construction assembly as specified by a qualified design professional, general contractor or builder. They should be installed in accordance with those specifications and Sto's instructions. Sto Corp. disclaims all, and assumes no, liability for on-site inspections, for its products applied improperly, or by unqualified persons or entities, or as part of an improperly designed or constructed building, for the nonperformance of adjacent building components or assemblies, or for other construction activities beyond Sto's control. Improper use of Sto products or use as part of an improperly designed or constructed larger assembly or building may result in serious damage to Sto products, and to the structure of the building or its components. **STO CORP. DISCLAIMS ALL WARRANTIES EXPRESS OR IMPLIED EXCEPT FOR EXPLICIT LIMITED WRITTEN WARRANTIES ISSUED TO AND ACCEPTED BY BUILDING OWNERS IN ACCORDANCE WITH STO'S WARRANTY PROGRAMS WHICH ARE SUBJECT TO CHANGE FROM TIME TO TIME.** For the fullest, most current information on proper application, clean-up, mixing and other specifications and warranties, cautions and disclaimers, please refer to the Sto Corp. website, www.stocorp.com.

www.stocorp.com

StoPowerwall® Termination at Balcony

Detail No.: 4.12

Date: December 2015



Notes:

- 1] Provide continuity of water protection at the wall / deck interface.
- 2] Provide clearance between the underside of the stucco and the deck to allow adequate drainage.
- 3] Refer to Sto Detail 4.45 for termination and drainage at the edge of the floor slab.
- 4] Lap StoGuard® Detail component onto weep screed to direct water to the exterior. See Sto detail 4.09.

IMPORTANT: Components not identified as Sto are furnished by other manufacturers and are not necessarily installed by trades who install the Sto products. Refer to project specific contract documents.

Attention

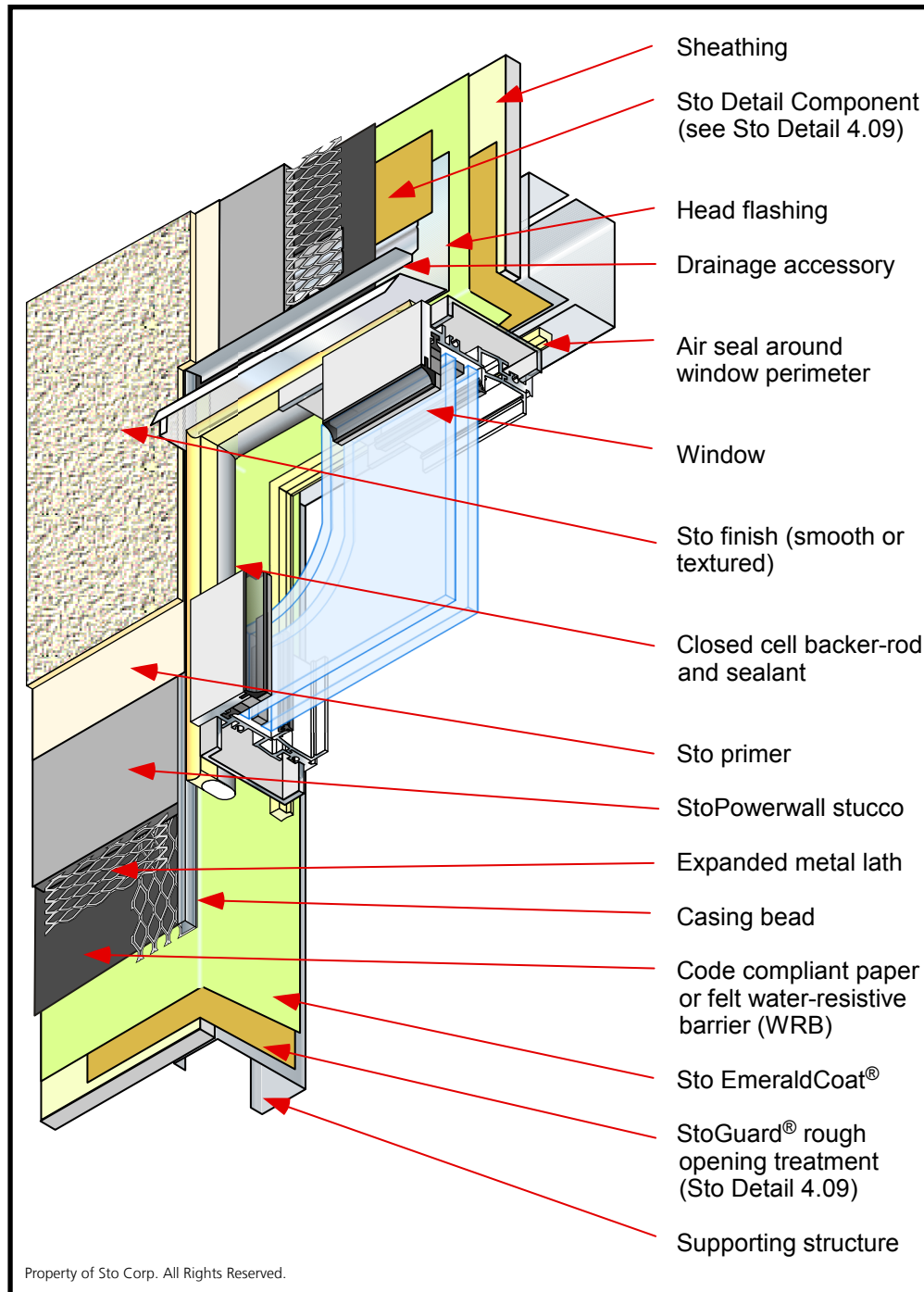
Sto products are intended for use by qualified professional contractors, not consumers, as a component of a larger construction assembly as specified by a qualified design professional, general contractor or builder. They should be installed in accordance with those specifications and Sto's instructions. Sto Corp. disclaims all, and assumes no, liability for on-site inspections, for its products applied improperly, or by unqualified persons or entities, or as part of an improperly designed or constructed building, for the nonperformance of adjacent building components or assemblies, or for other construction activities beyond Sto's control. Improper use of Sto products or use as part of an improperly designed or constructed larger assembly or building may result in serious damage to Sto products, and to the structure of the building or its components. **STO CORP. DISCLAIMS ALL WARRANTIES EXPRESS OR IMPLIED EXCEPT FOR EXPLICIT LIMITED WRITTEN WARRANTIES ISSUED TO AND ACCEPTED BY BUILDING OWNERS IN ACCORDANCE WITH STO'S WARRANTY PROGRAMS WHICH ARE SUBJECT TO CHANGE FROM TIME TO TIME.** For the fullest, most current information on proper application, clean-up, mixing and other specifications and warranties, cautions and disclaimers, please refer to the Sto Corp. website, www.stocorp.com.

www.stocorp.com

StoPowerwall® Commercial Window Head

Detail No.: 4.20

Date: December 2015



Property of Sto Corp. All Rights Reserved.

Notes:

- 1] Provide a mock-up installation and test using materials and substrates associated with the project.
- 2] Provide flashing installed over the window to direct water away from the window. Verify requirements for head flashing with local codes and window manufacturer.
- 3] Protect rough opening against water penetration by wrapping with Sto Guard®. Direct any water penetration to the exterior at or above the sill pan flashing. (Refer to Sto detail 4.09)
- 4] Provide continuous air barrier connection around the perimeter of the window to reduce leaking, condensation related to air movement and sound and insect intrusion.
- 5] Provide window insert to optimize sealant configuration.

IMPORTANT: Components not identified as Sto are furnished by other manufacturers and are not necessarily installed by trades who install the Sto products. Refer to project specific contract documents.

Attention

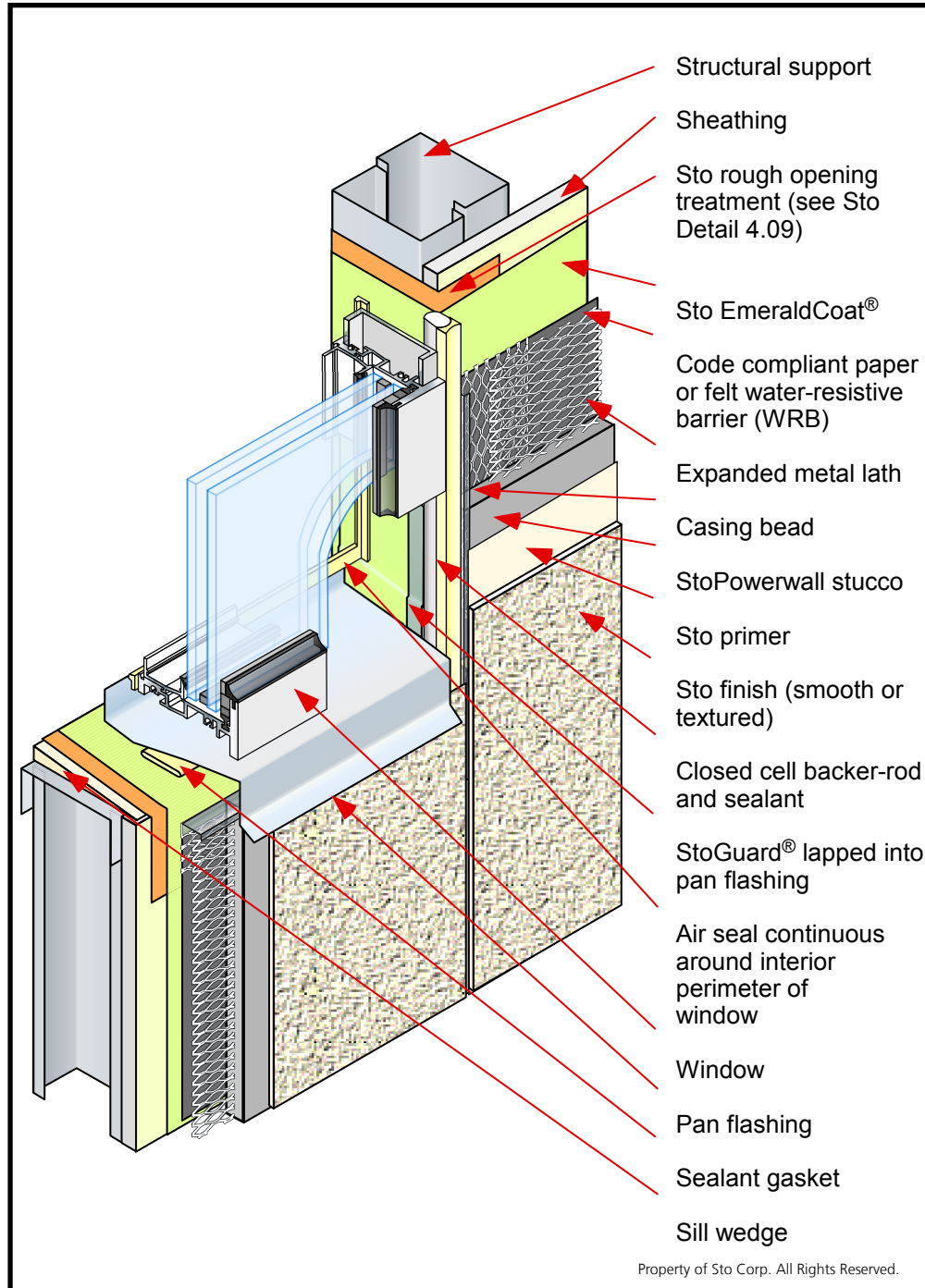
Sto products are intended for use by qualified professional contractors, not consumers, as a component of a larger construction assembly as specified by a qualified design professional, general contractor or builder. They should be installed in accordance with those specifications and Sto's instructions. Sto Corp. disclaims all, and assumes no, liability for on-site inspections, for its products applied improperly, or by unqualified persons or entities, or as part of an improperly designed or constructed building, for the nonperformance of adjacent building components or assemblies, or for other construction activities beyond Sto's control. Improper use of Sto products or use as part of an improperly designed or constructed larger assembly or building may result in serious damage to Sto products, and to the structure of the building or its components. **STO CORP. DISCLAIMS ALL WARRANTIES EXPRESS OR IMPLIED EXCEPT FOR EXPLICIT LIMITED WRITTEN WARRANTIES ISSUED TO AND ACCEPTED BY BUILDING OWNERS IN ACCORDANCE WITH STO'S WARRANTY PROGRAMS WHICH ARE SUBJECT TO CHANGE FROM TIME TO TIME.** For the fullest, most current information on proper application, clean-up, mixing and other specifications and warranties, cautions and disclaimers, please refer to the Sto Corp. website, www.stocorp.com.

www.stocorp.com

StoPowerwall® Commercial Window Sill

Detail No.: 4.22

Date: December 2015



Notes:

- 1] Provide a mock-up installation and test using materials and substrates associated with the project.
- 2] Prepare opening prior to the installation of the window. Coordinate installation with other associated substrates.
- 3] Provide StoGuard® air/moisture barrier and other associated trim and accessories as noted in Sto detail 4.09.
- 4] Provide pan flashing at sill to drain water to the exterior.
- 5] In cold climates this detail will provide little insulation around the pan flashing. The designer should specify a pan design that will provide a thermal break.
- 6] Provide continuous air barrier connection around perimeter of the window to reduce leaking, condensation related to air movement, sound, and insect intrusion.

IMPORTANT: Components not identified as Sto are furnished by other manufacturers and are not necessarily installed by trades who install the Sto products. Refer to project specific contract documents.

Attention

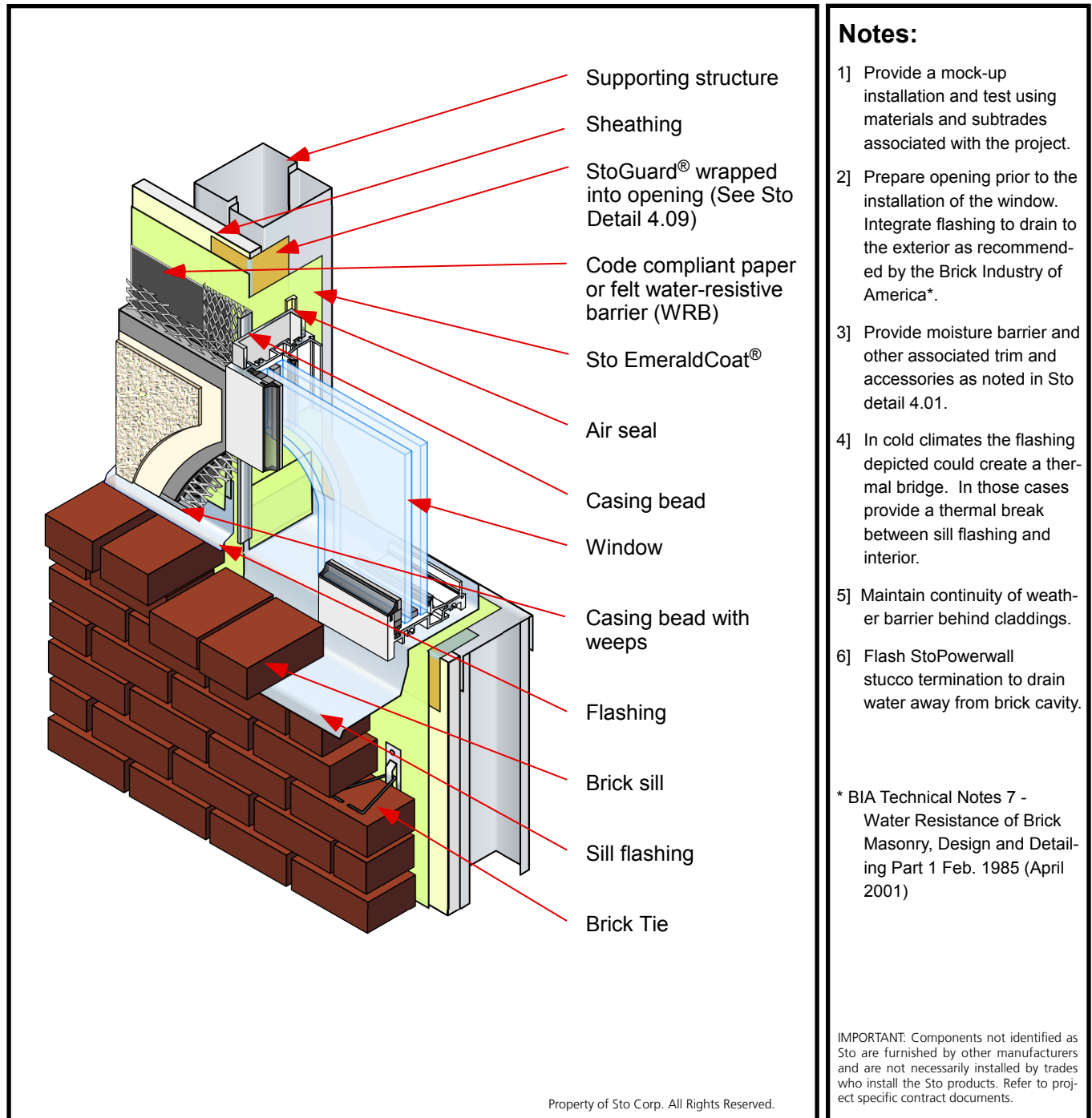
Sto products are intended for use by qualified professional contractors, not consumers, as a component of a larger construction assembly as specified by a qualified design professional, general contractor or builder. They should be installed in accordance with those specifications and Sto's instructions. Sto Corp. disclaims all, and assumes no, liability for on-site inspections, for its products applied improperly, or by unqualified persons or entities, or as part of an improperly designed or constructed building, for the nonperformance of adjacent building components or assemblies, or for other construction activities beyond Sto's control. Improper use of Sto products or use as part of an improperly designed or constructed larger assembly or building may result in serious damage to Sto products, and to the structure of the building or its components. **STO CORP. DISCLAIMS ALL WARRANTIES EXPRESS OR IMPLIED EXCEPT FOR EXPLICIT LIMITED WRITTEN WARRANTIES ISSUED TO AND ACCEPTED BY BUILDING OWNERS IN ACCORDANCE WITH STO'S WARRANTY PROGRAMS WHICH ARE SUBJECT TO CHANGE FROM TIME TO TIME.** For the fullest, most current information on proper application, clean-up, mixing and other specifications and warranties, cautions and disclaimers, please refer to the Sto Corp. website, www.stocorp.com.

www.stocorp.com

StoPowerwall® Stucco/Brick/Window Interface

Detail No.: 4.28

Date: December 2015



Attention

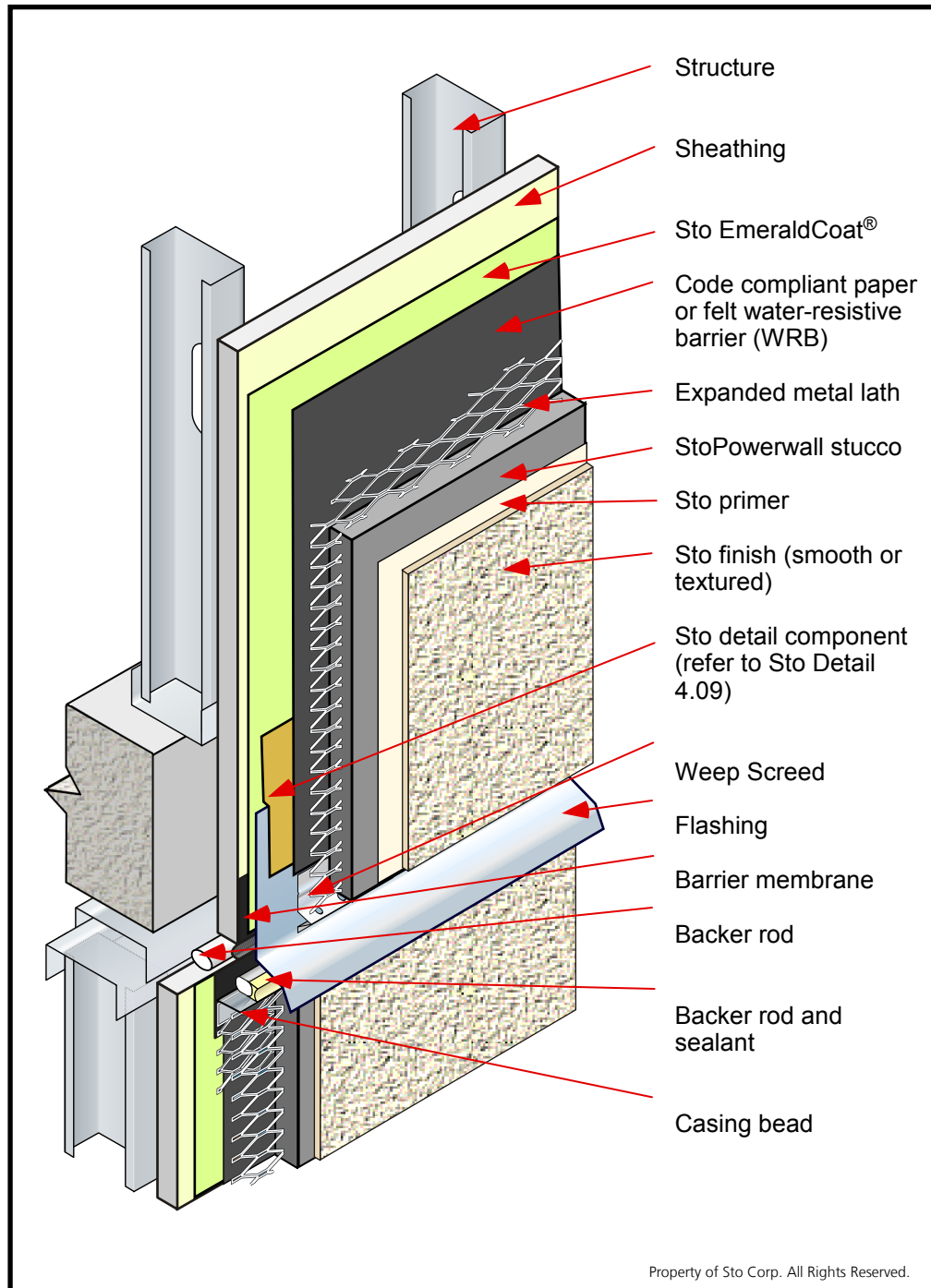
Sto products are intended for use by qualified professional contractors, not consumers, as a component of a larger construction assembly as specified by a qualified design professional, general contractor or builder. They should be installed in accordance with those specifications and Sto's instructions. Sto Corp. disclaims all, and assumes no, liability for on-site inspections, for its products applied improperly, or by unqualified persons or entities, or as part of an improperly designed or constructed building, for the nonperformance of adjacent building components or assemblies, or for other construction activities beyond Sto's control. Improper use of Sto products or use as part of an improperly designed or constructed larger assembly or building may result in serious damage to Sto products, and to the structure of the building or its components. **STO CORP. DISCLAIMS ALL WARRANTIES, EXPRESS OR IMPLIED EXCEPT FOR EXPLICIT LIMITED WRITTEN WARRANTIES ISSUED TO AND ACCEPTED BY BUILDING OWNERS IN ACCORDANCE WITH STO'S WARRANTY PROGRAMS WHICH ARE SUBJECT TO CHANGE FROM TIME TO TIME.** For the fullest, most current information on proper application, clean-up, mixing and other specifications and warranties, cautions and disclaimers, please refer to the Sto Corp. website, www.stocorp.com.

www.stocorp.com

StoPowerwall® Floor Line Joint with Nested Track

Detail No.: 4.50

Date: December 2015



Notes:

- 1] Do not attach upper sheathing to nested track. Only attach lower sheathing to nested track.
- 2] The maximum allowable sheathing span at the floor line is 8" (200mm) or as recommended by the sheathing manufacturer.
- 3] A barrier membrane is installed over the joint in the sheathing to provide air barrier continuity and secondary weather protection at the joint location.
- 4] Provide a minimum 3/4" (20mm) joint to accommodate deflection of the floor slab.
- 5] Install a flashing to direct water beyond the face of the cladding below.

IMPORTANT: Components not identified as Sto are furnished by other manufacturers and are not necessarily installed by trades who install the Sto products. Refer to project specific contract documents.

Property of Sto Corp. All Rights Reserved.

www.stocorp.com

Attention

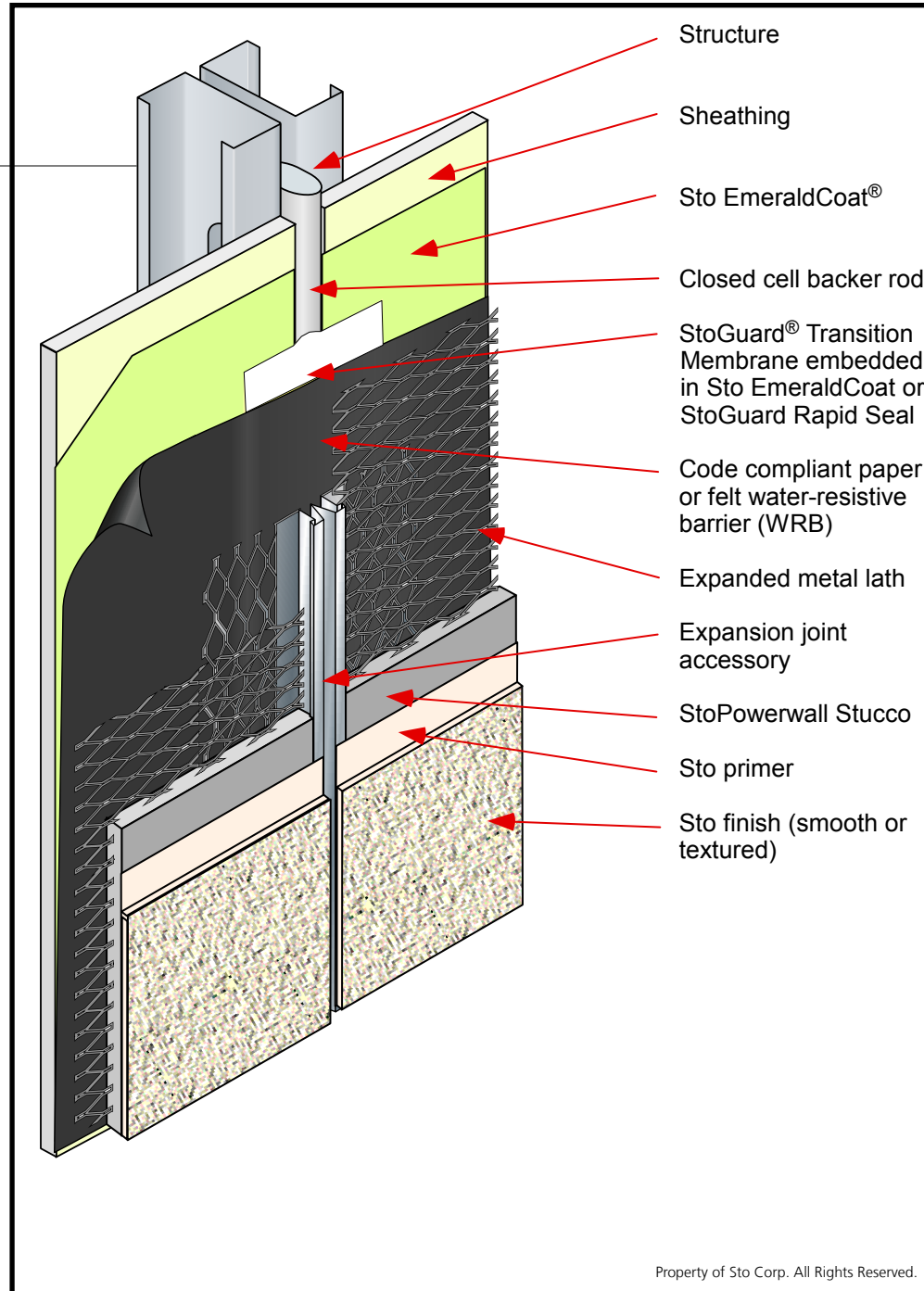
Sto products are intended for use by qualified professional contractors, not consumers, as a component of a larger construction assembly as specified by a qualified design professional, general contractor or builder. They should be installed in accordance with those specifications and Sto's instructions. Sto Corp. disclaims all, and assumes no, liability for on-site inspections, for its products applied improperly, or by unqualified persons or entities, or as part of an improperly designed or constructed building, for the nonperformance of adjacent building components or assemblies, or for other construction activities beyond Sto's control. Improper use of Sto products or use as part of an improperly designed or constructed larger assembly or building may result in serious damage to Sto products, and to the structure of the building or its components. **STO CORP. DISCLAIMS ALL WARRANTIES EXPRESS OR IMPLIED EXCEPT FOR EXPLICIT LIMITED WRITTEN WARRANTIES ISSUED TO AND ACCEPTED BY BUILDING OWNERS IN ACCORDANCE WITH STO'S WARRANTY PROGRAMS WHICH ARE SUBJECT TO CHANGE FROM TIME TO TIME.** For the fullest, most current information on proper application, clean-up, mixing and other specifications and warranties, cautions and disclaimers, please refer to the Sto Corp. website, www.stocorp.com.

Sto products are intended for use by qualified professional contractors, not consumers, as a component of a larger construction assembly as specified by a qualified design professional, general contractor or builder. They should be installed in accordance with those specifications and Sto's instructions. Sto Corp. disclaims all, and assumes no, liability for on-site inspections, installation, or improper use by unqualified persons or entities, or as part of an improperly designed or constructed building, the nonperformance of adjacent building components or assemblies, or for other construction activities beyond Sto's control. Improper use of Sto products or use as part of an improperly designed or constructed larger assembly or building may result in serious damage to Sto products, and to the structure of the building or its components. **STO CORP. DISCLAIMS ALL WARRANTIES EXPRESS OR IMPLIED EXCEPT FOR EXPLICIT LIMITED WRITTEN WARRANTIES ISSUED TO AND ACCEPTED BY BUILDING OWNERS IN ACCORDANCE WITH STO'S WARRANTY PROGRAMS WHICH ARE SUBJECT TO CHANGE FROM TIME TO TIME.** For the fullest, most current information on proper application, clean-up, mixing and other specifications and warranties, cautions and disclaimers, please refer to the Sto Corp. website, www.stocorp.com.

StoPowerwall® One-Piece Expansion Joint

Detail No.: 4.52a

Date: December 2015



Notes:

- 1] Provide expansion joints where movement in stucco or substrate is anticipated:
 - at floor lines,
 - at dissimilar construction materials,
 - at existing building or expansion joints in the construction,
 - at changes in building height,
 - at columns or cantilevered areas,
 - at maximum 144 ft² (13.4 m²) intervals
- 2] Do not exceed length to width ratio of 2.5:1 in expansion joint layout and do not exceed more than 18' (5.5m) in any direction without an expansion joint.
- 3] Provide barrier membrane over the joint in the sheathing to maintain waterproofing/air barrier integrity. Support with a closed cell backer rod.
- 4] Provide one piece expansion joint accessory over the moisture barrier and lap the expanded metal lath over the flanges. Metal lath must be discontinuous at the expansion joint.
- 5] Comply with ASTM 1063.

IMPORTANT: Components not identified as Sto are furnished by other manufacturers and are not necessarily installed by trades who install the Sto products. Refer to project specific contract documents.

Attention

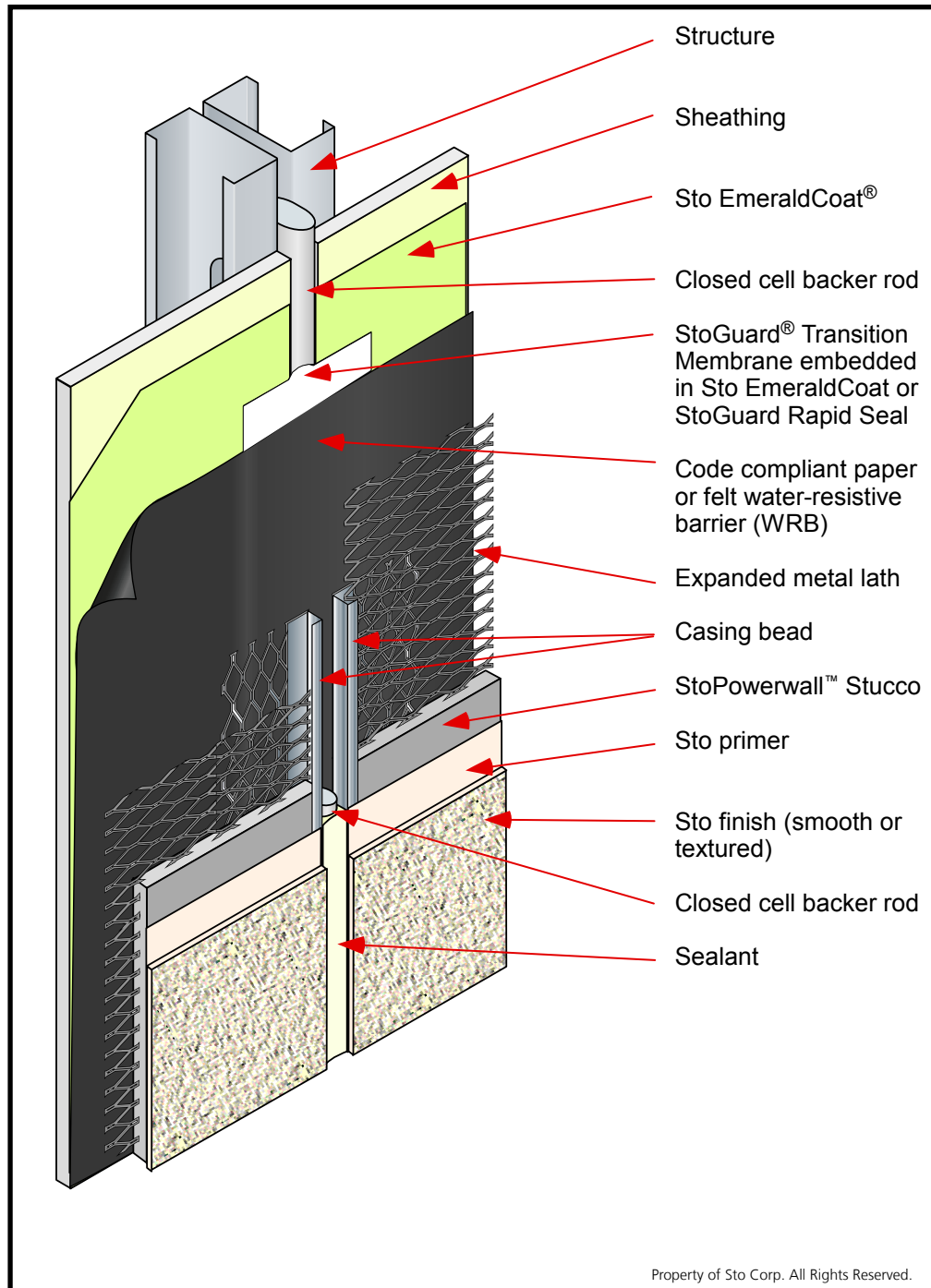
Sto products are intended for use by qualified professional contractors, not consumers, as a component of a larger construction assembly as specified by a qualified design professional, general contractor or builder. They should be installed in accordance with those specifications and Sto's instructions. Sto Corp. disclaims all, and assumes no, liability for on-site inspections, for its products applied improperly, or by unqualified persons or entities, or as part of an improperly designed or constructed building, for the nonperformance of adjacent building components or assemblies, or for other construction activities beyond Sto's control. Improper use of Sto products or use as part of an improperly designed or constructed larger assembly or building may result in serious damage to Sto products, and to the structure of the building or its components. **STO CORP. DISCLAIMS ALL WARRANTIES EXPRESS OR IMPLIED EXCEPT FOR EXPLICIT LIMITED WRITTEN WARRANTIES ISSUED TO AND ACCEPTED BY BUILDING OWNERS IN ACCORDANCE WITH STO'S WARRANTY PROGRAMS WHICH ARE SUBJECT TO CHANGE FROM TIME TO TIME.** For the fullest, most current information on proper application, clean-up, mixing and other specifications and warranties, cautions and disclaimers, please refer to the Sto Corp. website, www.stocorp.com.

www.stocorp.com

StoPowerwall® Two-Piece Expansion Joint

Detail No.: 4.52b

Date: December 2015



Notes:

- 1] Provide expansion joints where movement in stucco or substrate is anticipated:
 - at floor lines,
 - at dissimilar construction materials,
 - at existing building or expansion joints in the construction,
 - at changes in building height,
 - at columns or cantilevered areas,
 - at maximum 144 ft² (13.4 m²) intervals
- 2] Do not exceed length to width ratio of 2.5:1 in expansion joint layout and do not exceed more than 18' (5.5m) in any direction without an expansion joint.
- 3] Provide barrier membrane over the joint in the sheathing to maintain waterproofing/air barrier integrity. Support with a closed cell backer rod.
- 4] Provide back-to-back casing beads or two piece expansion joint accessory over the moisture barrier and lap the expanded metal lath over the flanges. Metal lath must be discontinuous at the expansion joint.
- 5] Provide backer rod and sealant between the casing beads.
- 6] Comply with ASTM 1063.

IMPORTANT: Components not identified as Sto are furnished by other manufacturers and are not necessarily installed by trades who install the Sto products. Refer to project specific contract documents.

Attention

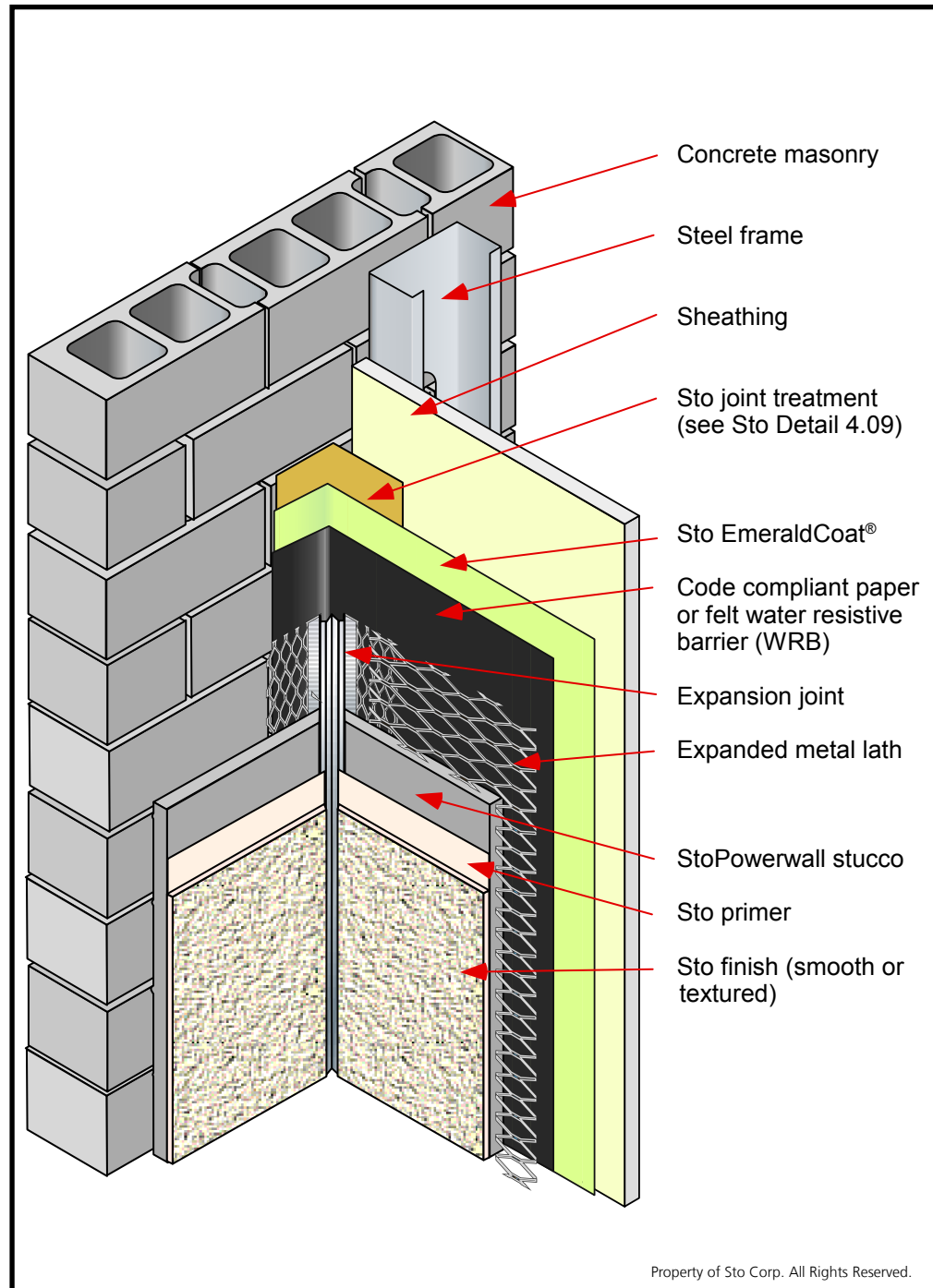
Sto products are intended for use by qualified professional contractors, not consumers, as a component of a larger construction assembly as specified by a qualified design professional, general contractor or builder. They should be installed in accordance with those specifications and Sto's instructions. Sto Corp. disclaims all, and assumes no, liability for on-site inspections, for its products applied improperly, or by unqualified persons or entities, or as part of an improperly designed or constructed building, for the nonperformance of adjacent building components or assemblies, or for other construction activities beyond Sto's control. Improper use of Sto products or use as part of an improperly designed or constructed larger assembly or building may result in serious damage to Sto products, and to the structure of the building or its components. **STO CORP. DISCLAIMS ALL WARRANTIES EXPRESS OR IMPLIED EXCEPT FOR EXPLICIT LIMITED WRITTEN WARRANTIES ISSUED TO AND ACCEPTED BY BUILDING OWNERS IN ACCORDANCE WITH STO'S WARRANTY PROGRAMS WHICH ARE SUBJECT TO CHANGE FROM TIME TO TIME.** For the fullest, most current information on proper application, clean-up, mixing and other specifications and warranties, cautions and disclaimers, please refer to the Sto Corp. website, www.stocorp.com.

www.stocorp.com

StoPowerwall® Joint at Inside Corner: Different Substrates

Detail No.: 4.53

Date: December 2015



Notes:

- 1] Install Sto joint treatment approximately 4" (100mm) onto each face. Refer to Sto Detail 4.09. (StoGuard® Mesh is not recommended over masonry substrate.) Do not extend StoGuard on CMU beyond the expanded flange of the accessory.
- 2] Apply Sto EmeraldCoat® over sheathing substrate.
- 3] Inside corner joints are not recommended where the substrate construction on either side of the corner is the same.
- 4] StoPowerwall Stucco applied directly to CMU functions as a water and air resistant assembly.

IMPORTANT: Components not identified as Sto are furnished by other manufacturers and are not necessarily installed by trades who install the Sto products. Refer to project specific contract documents.

Attention

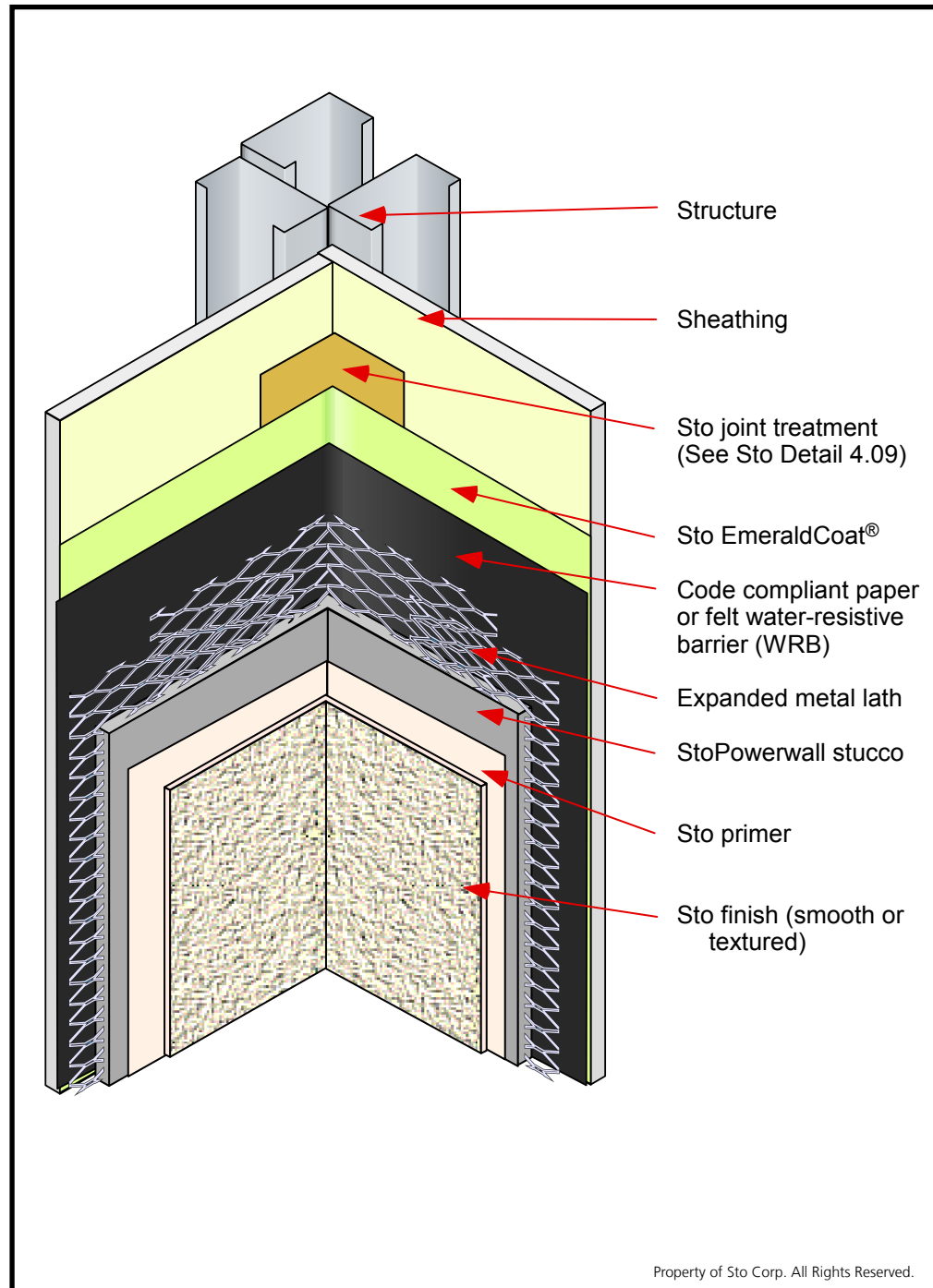
Sto products are intended for use by qualified professional contractors, not consumers, as a component of a larger construction assembly as specified by a qualified design professional, general contractor or builder. They should be installed in accordance with those specifications and Sto's instructions. Sto Corp. disclaims all, and assumes no, liability for on-site inspections, for its products applied improperly, or by unqualified persons or entities, or as part of an improperly designed or constructed building, for the nonperformance of adjacent building components or assemblies, or for other construction activities beyond Sto's control. Improper use of Sto products or use as part of an improperly designed or constructed larger assembly or building may result in serious damage to Sto products, and to the structure of the building or its components. **STO CORP. DISCLAIMS ALL WARRANTIES EXPRESS OR IMPLIED EXCEPT FOR EXPLICIT LIMITED WRITTEN WARRANTIES ISSUED TO AND ACCEPTED BY BUILDING OWNERS IN ACCORDANCE WITH STO'S WARRANTY PROGRAMS WHICH ARE SUBJECT TO CHANGE FROM TIME TO TIME.** For the fullest, most current information on proper application, clean-up, mixing and other specifications and warranties, cautions and disclaimers, please refer to the Sto Corp. website, www.stocorp.com.

www.stocorp.com

StoPowerwall® Inside Corner: Common Substrate

Detail No.: 4.54

Date: December 2015



Notes:

- 1] Install StoGuard® joint treatment minimum 4" (100 mm) onto each face of inside corner and trowel Sto joint treatment over the mesh. Refer to Sto Detail 4.09.
- 2] Apply Sto EmeraldCoat® to sheathing substrate.
- 3] Inside corner joints are not recommended where the substrate construction on either side of the corner is the same.

IMPORTANT: Components not identified as Sto are furnished by other manufacturers and are not necessarily installed by trades who install the Sto products. Refer to project specific contract documents.

Attention

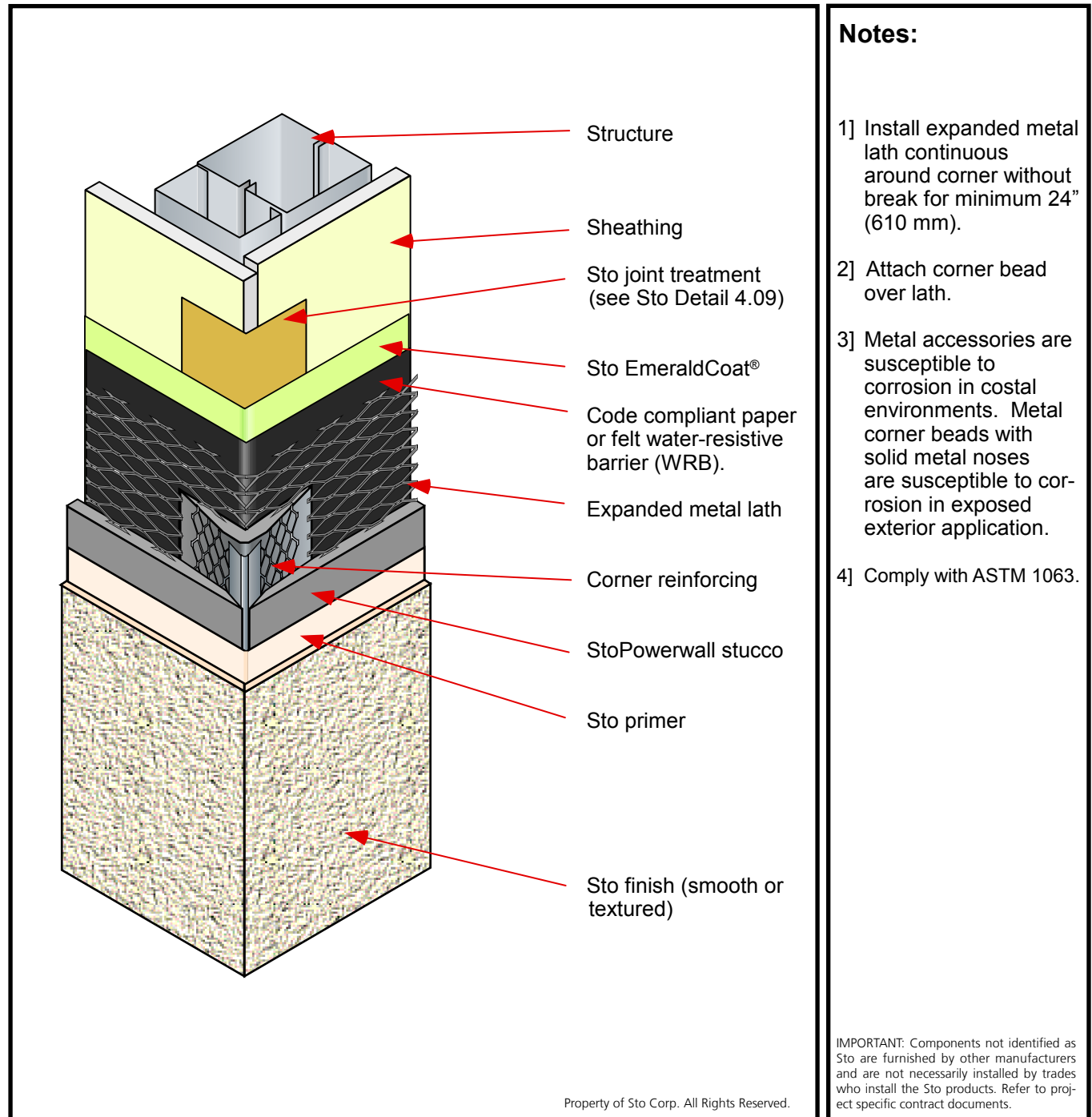
Sto products are intended for use by qualified professional contractors, not consumers, as a component of a larger construction assembly as specified by a qualified design professional, general contractor or builder. They should be installed in accordance with those specifications and Sto's instructions. Sto Corp. disclaims all, and assumes no, liability for on-site inspections, for its products applied improperly, or by unqualified persons or entities, or as part of an improperly designed or constructed building, for the nonperformance of adjacent building components or assemblies, or for other construction activities beyond Sto's control. Improper use of Sto products or use as part of an improperly designed or constructed larger assembly or building may result in serious damage to Sto products, and to the structure of the building or its components. **STO CORP. DISCLAIMS ALL WARRANTIES EXPRESS OR IMPLIED EXCEPT FOR EXPLICIT LIMITED WRITTEN WARRANTIES ISSUED TO AND ACCEPTED BY BUILDING OWNERS IN ACCORDANCE WITH STO'S WARRANTY PROGRAMS WHICH ARE SUBJECT TO CHANGE FROM TIME TO TIME.** For the fullest, most current information on proper application, clean-up, mixing and other specifications and warranties, cautions and disclaimers, please refer to the Sto Corp. website, www.stocorp.com.

www.stocorp.com

StoPowerwall® Outside Corner

Detail No.: 4.55

Date: December 2015



Attention

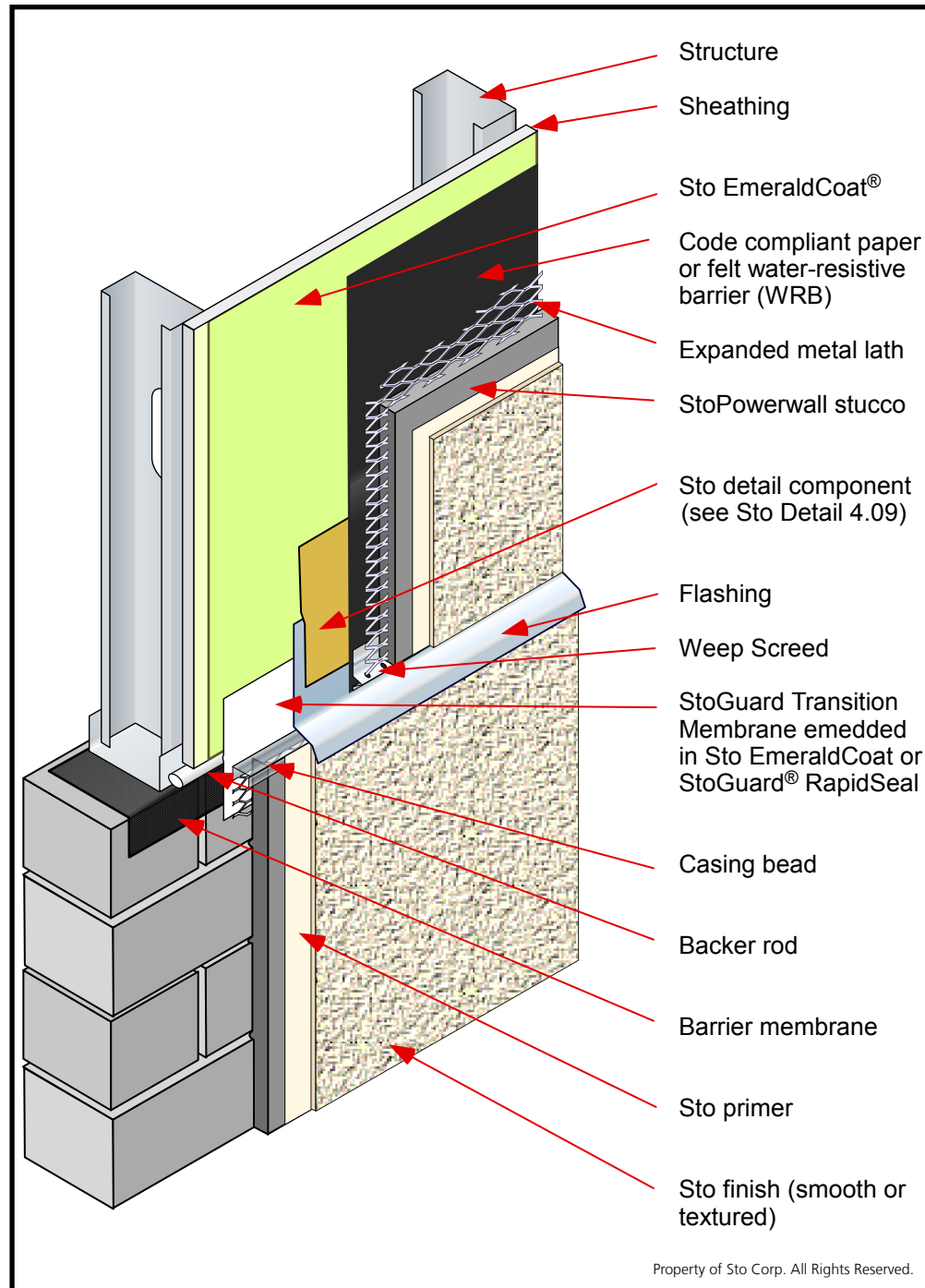
Sto products are intended for use by qualified professional contractors, not consumers, as a component of a larger construction assembly as specified by a qualified design professional, general contractor or builder. They should be installed in accordance with those specifications and Sto's instructions. Sto Corp. disclaims all, and assumes no, liability for on-site inspections, for its products applied improperly, or by unqualified persons or entities, or as part of an improperly designed or constructed building, for the nonperformance of adjacent building components or assemblies, or for other construction activities beyond Sto's control. Improper use of Sto products or use as part of an improperly designed or constructed larger assembly or building may result in serious damage to Sto products, and to the structure of the building or its components. **STO CORP. DISCLAIMS ALL WARRANTIES EXPRESS OR IMPLIED EXCEPT FOR EXPLICIT LIMITED WRITTEN WARRANTIES ISSUED TO AND ACCEPTED BY BUILDING OWNERS IN ACCORDANCE WITH STO'S WARRANTY PROGRAMS WHICH ARE SUBJECT TO CHANGE FROM TIME TO TIME.** For the fullest, most current information on proper application, clean-up, mixing and other specifications and warranties, cautions and disclaimers, please refer to the Sto Corp. website, www.stocorp.com.

www.stocorp.com

StoPowerwall® CMU/Steel Frame Junction

Detail No.: 4.58

Date: December 2015



Notes:

- 1] Provide a drained joint at the interface of frame and masonry substrates.
- 2] Protect the steel frame from the potential of rising damp within the concrete masonry units.
- 3] Do not extend barrier membrane on CMU beyond the expanded flange of the accessory.

IMPORTANT: Components not identified as Sto are furnished by other manufacturers and are not necessarily installed by trades who install the Sto products. Refer to project specific contract documents.

Attention

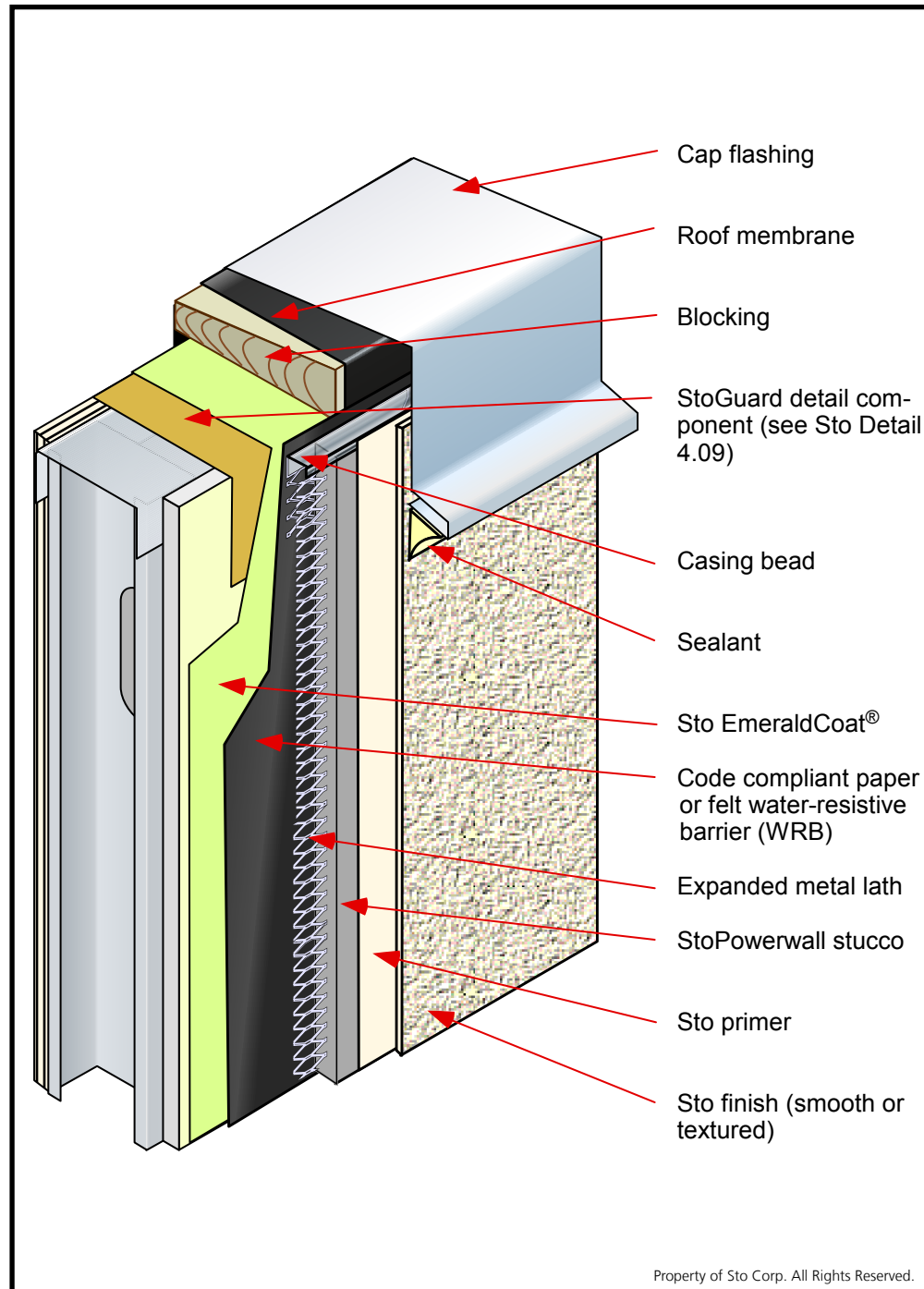
Sto products are intended for use by qualified professional contractors, not consumers, as a component of a larger construction assembly as specified by a qualified design professional, general contractor or builder. They should be installed in accordance with those specifications and Sto's instructions. Sto Corp. disclaims all, and assumes no, liability for on-site inspections, for its products applied improperly, or by unqualified persons or entities, or as part of an improperly designed or constructed building, for the nonperformance of adjacent building components or assemblies, or for other construction activities beyond Sto's control. Improper use of Sto products or use as part of an improperly designed or constructed larger assembly or building may result in serious damage to Sto products, and to the structure of the building or its components. **STO CORP. DISCLAIMS ALL WARRANTIES EXPRESS OR IMPLIED EXCEPT FOR EXPLICIT LIMITED WRITTEN WARRANTIES ISSUED TO AND ACCEPTED BY BUILDING OWNERS IN ACCORDANCE WITH STO'S WARRANTY PROGRAMS WHICH ARE SUBJECT TO CHANGE FROM TIME TO TIME.** For the fullest, most current information on proper application, clean-up, mixing and other specifications and warranties, cautions and disclaimers, please refer to the Sto Corp. website, www.stocorp.com.

www.stocorp.com

StoPowerwall® Termination at Parapet Cap

Detail No.: 4.60

Date: December 2015



Notes:

- 1] Install StoGuard® System over the parapet supporting structure lapping onto compatible sheathing.
- 2] Provide a barrier membrane over the parapet blocking and integrate it with the roofing or deck waterproofing assembly. This provides additional protection against water intrusion through penetration of mechanical fasteners.
- 3] Parapet illustrated is uninsulated. Conditioned interior air should not circulate in this space if there is a risk of condensation.
- 4] Provide a minimum 3" (75 mm) overlap of flashing over the face of the stucco. Increase overlap with building height.

IMPORTANT: Components not identified as Sto are furnished by other manufacturers and are not necessarily installed by trades who install the Sto products. Refer to project specific contract documents.

Attention

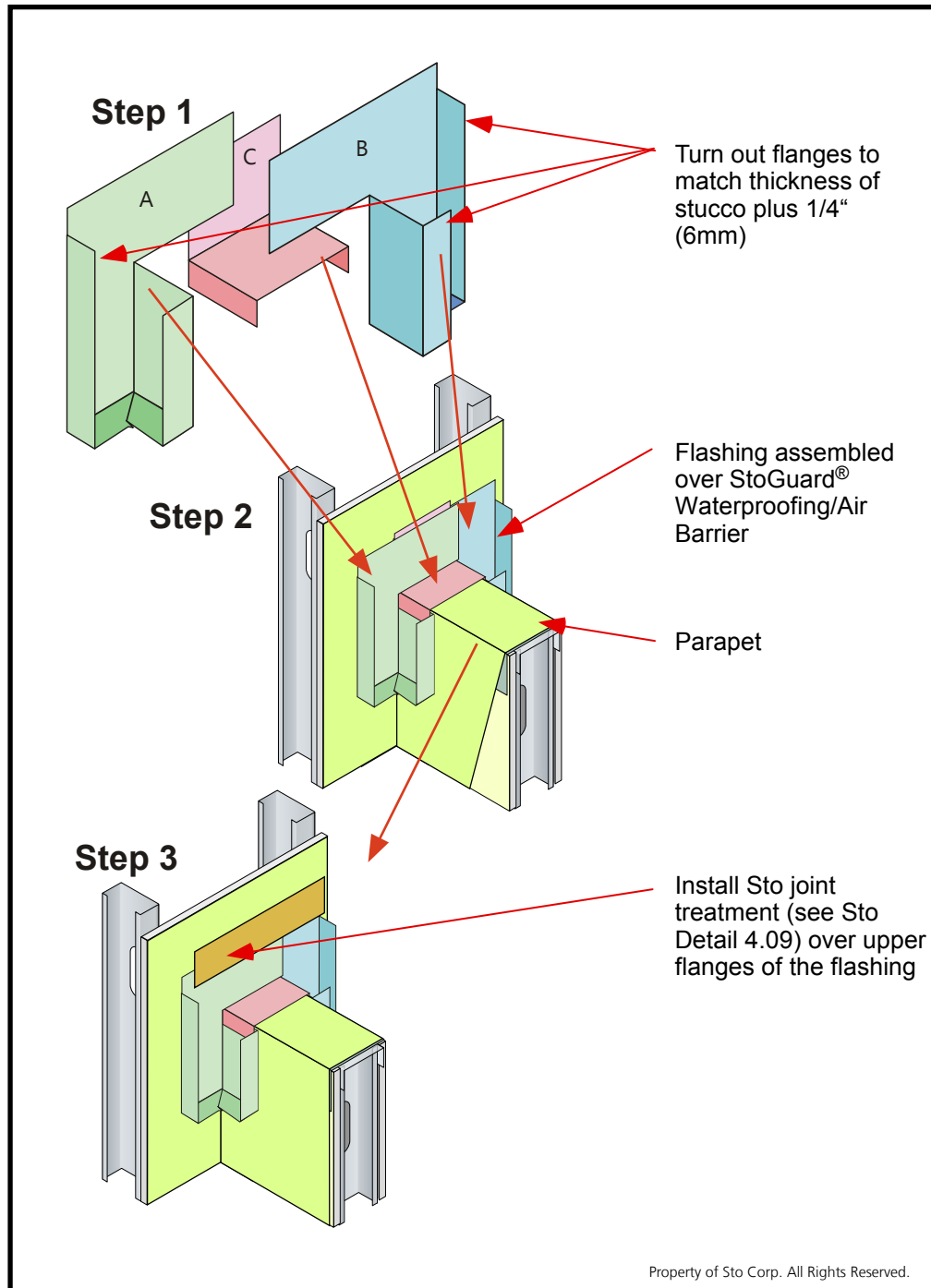
Sto products are intended for use by qualified professional contractors, not consumers, as a component of a larger construction assembly as specified by a qualified design professional, general contractor or builder. They should be installed in accordance with those specifications and Sto's instructions. Sto Corp. disclaims all, and assumes no, liability for on-site inspections, for its products applied improperly, or by unqualified persons or entities, or as part of an improperly designed or constructed building, for the nonperformance of adjacent building components or assemblies, or for other construction activities beyond Sto's control. Improper use of Sto products or use as part of an improperly designed or constructed larger assembly or building may result in serious damage to Sto products, and to the structure of the building or its components. **STO CORP. DISCLAIMS ALL WARRANTIES EXPRESS OR IMPLIED EXCEPT FOR EXPLICIT LIMITED WRITTEN WARRANTIES ISSUED TO AND ACCEPTED BY BUILDING OWNERS IN ACCORDANCE WITH STO'S WARRANTY PROGRAMS WHICH ARE SUBJECT TO CHANGE FROM TIME TO TIME.** For the fullest, most current information on proper application, clean-up, mixing and other specifications and warranties, cautions and disclaimers, please refer to the Sto Corp. website, www.stocorp.com.

www.stocorp.com

StoPowerwall® Saddle Flashing Assembly

Detail No.: 4.64

Date: December 2015



Notes:

- 1] Pieces 'A' and 'B' are folded as shown and are mirror images of each other. The flat top portions are designed to overlap over the lower parapet wall and flat against the higher wall. The turnouts are to match the thickness of the stucco plus 1/4" (6 mm) so water will drain beyond the stucco finish.
- 2] Piece 'C' is designed to straddle the parapet wall. The upturned flange is placed behind the flat flanges of 'A' and 'B' and the two down-turned legs interlock over the lower portions of 'A' and 'B' in a shingle fashion.
- 3] The assembled pieces are installed against StoGuard® air/moisture barrier and into a sealant gasket.
- 4] Install Sto joint treatment and Sto EmeraldCoat® over the top flanges to ensure drainage to the exterior of the cladding.
- 5] Provide StoPowerwall Stucco as shown in Sto detail 4.65.

IMPORTANT: Components not identified as Sto are furnished by other manufacturers and are not necessarily installed by trades who install the Sto products. Refer to project specific contract documents.

Attention

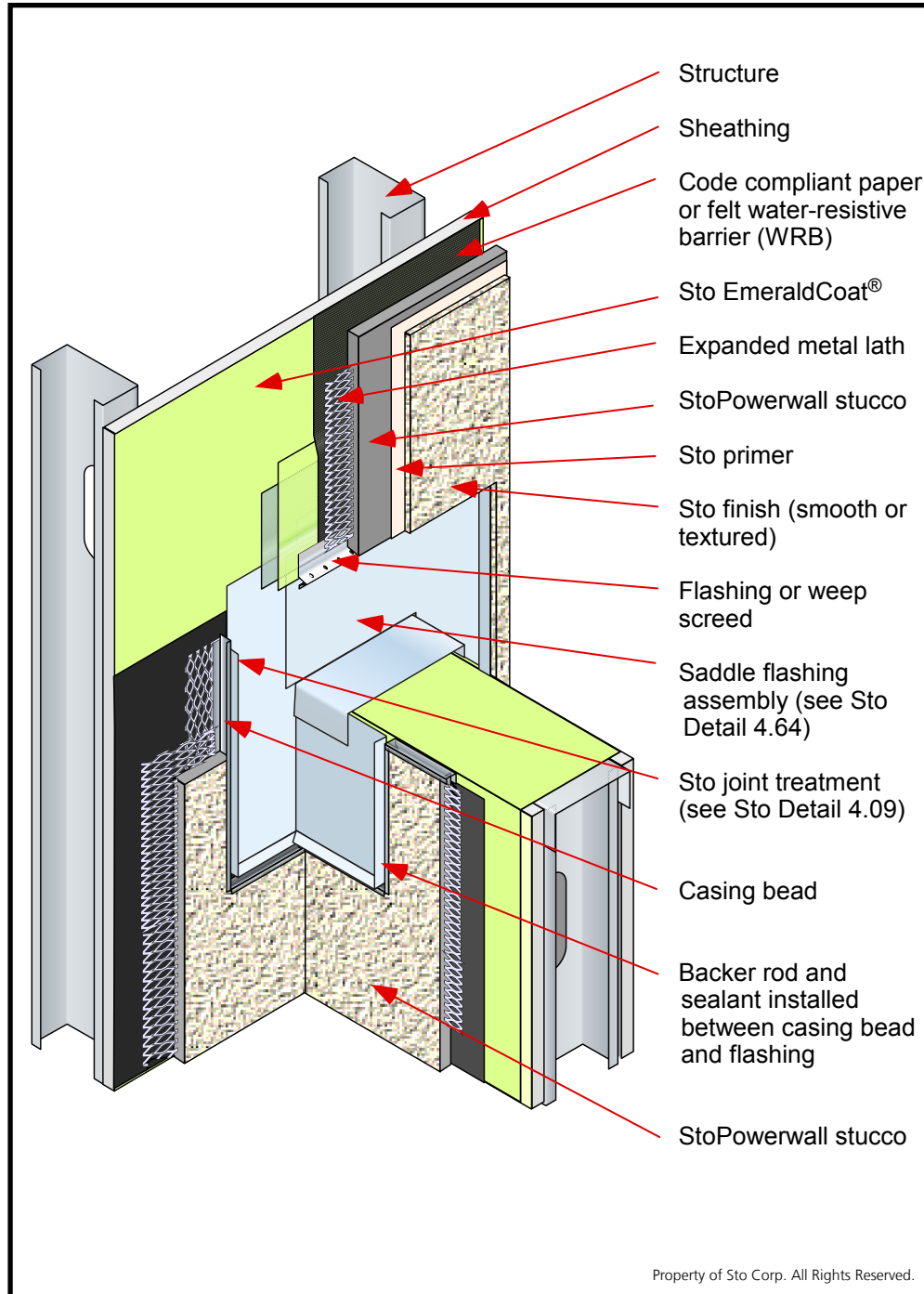
Sto products are intended for use by qualified professional contractors, not consumers, as a component of a larger construction assembly as specified by a qualified design professional, general contractor or builder. They should be installed in accordance with those specifications and Sto's instructions. Sto Corp. disclaims all, and assumes no, liability for on-site inspections, for its products applied improperly, or by unqualified persons or entities, or as part of an improperly designed or constructed building, for the nonperformance of adjacent building components or assemblies, or for other construction activities beyond Sto's control. Improper use of Sto products or use as part of an improperly designed or constructed larger assembly or building may result in serious damage to Sto products, and to the structure of the building or its components. **STO CORP. DISCLAIMS ALL WARRANTIES EXPRESS OR IMPLIED EXCEPT FOR EXPLICIT LIMITED WRITTEN WARRANTIES ISSUED TO AND ACCEPTED BY BUILDING OWNERS IN ACCORDANCE WITH STO'S WARRANTY PROGRAMS WHICH ARE SUBJECT TO CHANGE FROM TIME TO TIME.** For the fullest, most current information on proper application, clean-up, mixing and other specifications and warranties, cautions and disclaimers, please refer to the Sto Corp. website, www.stocorp.com.

www.stocorp.com

StoPowerwall® Saddle Flashing

Detail No.: 4.65

Date: December 2015



Notes:

- 1] Install StoPowerwall stucco over StoGuard® air/moisture barrier (see Sto detail 4.01).
- 2] Lap stucco over the flashing assembly at the top by a minimum of 2" (50mm) and terminate with 1/2" (13mm) joint around the perimeter.
- 3] Refer to Sto Detail 4.64 for assembly of saddle flashing.
- 4] Provide parapet cap flashing. (Refer to Sto detail 4.60 for termination at a parapet cap flashing.)

IMPORTANT: Components not identified as Sto are furnished by other manufacturers and are not necessarily installed by trades who install the Sto products. Refer to project specific contract documents.

Property of Sto Corp. All Rights Reserved.

Attention

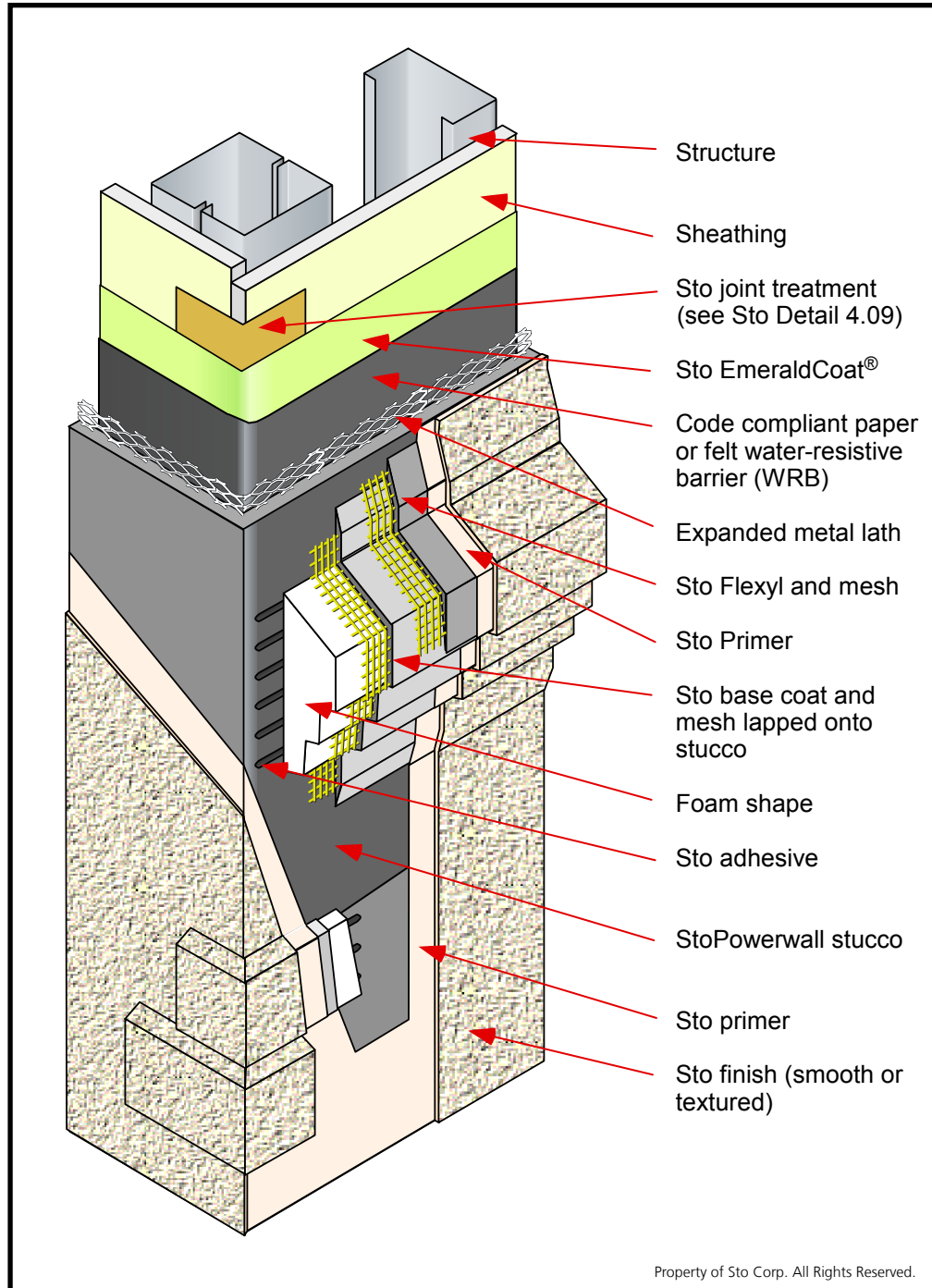
Sto products are intended for use by qualified professional contractors, not consumers, as a component of a larger construction assembly as specified by a qualified design professional, general contractor or builder. They should be installed in accordance with those specifications and Sto's instructions. Sto Corp. disclaims all, and assumes no, liability for on-site inspections, for its products applied improperly, or by unqualified persons or entities, or as part of an improperly designed or constructed building, for the nonperformance of adjacent building components or assemblies, or for other construction activities beyond Sto's control. Improper use of Sto products or use as part of an improperly designed or constructed larger assembly or building may result in serious damage to Sto products, and to the structure of the building or its components. **STO CORP. DISCLAIMS ALL WARRANTIES EXPRESS OR IMPLIED EXCEPT FOR EXPLICIT LIMITED WRITTEN WARRANTIES ISSUED TO AND ACCEPTED BY BUILDING OWNERS IN ACCORDANCE WITH STO'S WARRANTY PROGRAMS WHICH ARE SUBJECT TO CHANGE FROM TIME TO TIME.** For the fullest, most current information on proper application, clean-up, mixing and other specifications and warranties, cautions and disclaimers, please refer to the Sto Corp. website, www.stocorp.com.

www.stocorp.com

StoPowerwall® Buildouts

Detail No.: 4.70

Date: December 2015



Notes:

- 1] Install foam shapes over StoPowerwall stucco using Sto adhesive.
- 2] Cover the shapes with Sto base coat and reinforcing mesh lapping onto the face of the stucco a minimum of 2.5" (65 mm).
- 3] The exposed surface must have a minimum slope of 1:2 (27°). In locations where ice and snow may accumulate increase slope.
- 4] Provide Sto Flexyl and mesh on upper surfaces of buildouts projecting more than 2" (50 mm) from the stucco surface lapping over the base coat and stucco to provide a weather tight seal.
- 5] Consult local building code requirements for maximum allowable foam thickness
- 6] Apply Sto Primer over all surfaces to provide a uniform color base for the Sto finish.

IMPORTANT: Components not identified as Sto are furnished by other manufacturers and are not necessarily installed by trades who install the Sto products. Refer to project specific contract documents.

Attention

Sto products are intended for use by qualified professional contractors, not consumers, as a component of a larger construction assembly as specified by a qualified design professional, general contractor or builder. They should be installed in accordance with those specifications and Sto's instructions. Sto Corp. disclaims all, and assumes no, liability for on-site inspections, for its products applied improperly, or by unqualified persons or entities, or as part of an improperly designed or constructed building, for the nonperformance of adjacent building components or assemblies, or for other construction activities beyond Sto's control. Improper use of Sto products or use as part of an improperly designed or constructed larger assembly or building may result in serious damage to Sto products, and to the structure of the building or its components. **STO CORP. DISCLAIMS ALL WARRANTIES EXPRESS OR IMPLIED EXCEPT FOR EXPLICIT LIMITED WRITTEN WARRANTIES ISSUED TO AND ACCEPTED BY BUILDING OWNERS IN ACCORDANCE WITH STO'S WARRANTY PROGRAMS WHICH ARE SUBJECT TO CHANGE FROM TIME TO TIME.** For the fullest, most current information on proper application, clean-up, mixing and other specifications and warranties, cautions and disclaimers, please refer to the Sto Corp. website, www.stocorp.com.

www.stocorp.com